



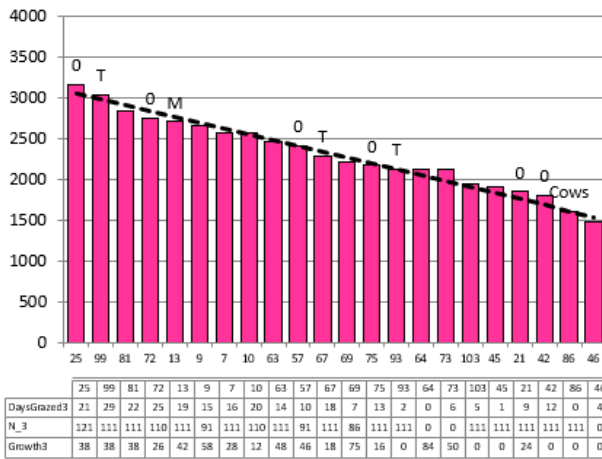
# 2021/22 Season Hub Weekly Farm Update Date: 06/01/2022

Date 05-01-22

Herd size (cows)	192	Average Cover	2317
Target residual (kg DM/ha)	1550	Average Growth	40
Target pasture intake (kg DM/cow)	15	Farmlet area	62.8
Target Area offered (ha/day)	1.90	Target rotation length	33
Last week actual rotation (d)	24	Target demand	46
Last week supp (kg DM/cow)	3.4	YTD supp (kg DM/cow)	362
Last week N (kg N/ha)	0	Fert N YTD	97
Milk yield (L/cow)	19.8	Effluent N YTD	3
Fat%	N	Last wk MS	W
Prot%	E	YTD MS/cow	E
SCC	X	YTD MS/ha	E
Average BCS	T	% less than BCS 4	K

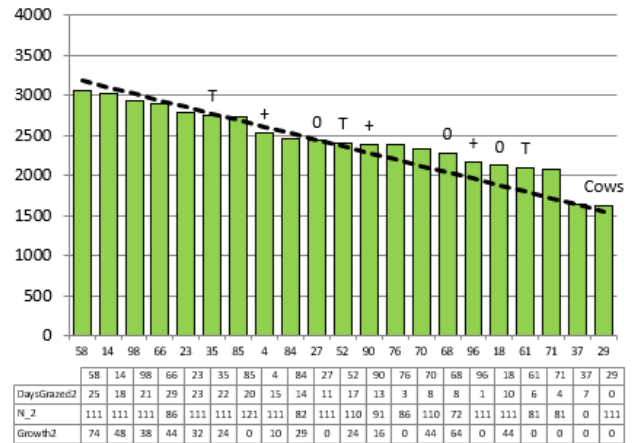
Herd size (cows)	193	Average Cover	2433
Target residual (kg DM/ha)	1550	Average Growth	38
Target pasture intake (kg DM/cow)	16	Farmlet area	60.6
Target Area offered (ha/day)	1.9	Target rotation length	32
Last week actual rotation (d)	34	Target demand	51
Last week supp (kg DM/cow)	1.7	YTD supp (kg DM/cow)	275
Last week N (kg N/ha)	0	Fert N YTD	92
Milk yield (L/cow)	17.7	Effluent N YTD	5
Fat%	N	Last wk MS	W
Prot%	E	YTD MS/cow	E
SCC	X	YTD MS/ha	E
Average BCS	T	% less than BCS 4	K

### Standard Kale



Farmlet notes: Visual APC 2301, GR 57; offer 3 kg DM PKE only inshed while wait on load of blend to arrive; no N fertiliser this week due to dry conditions; maintain 30 day rotation; x2 bull matings recorded in the last week; growth holding but farmlet still tight; all new grass pdks back in rotation now.

### Standard Fodder Beet



Farmlet notes: Visual APC 2371, GR 48; offering 1 kg DM PKE in the shed at milking & 1 bale baleage/day (1.1 kg DM/cow) to hold rotation at 30+ days; No N fertiliser this week due to dry conditions; APC is holding but growth is well below demand; x6 bull matings recorded in the last week; longer rotation last week as had grazings from italian pdk.

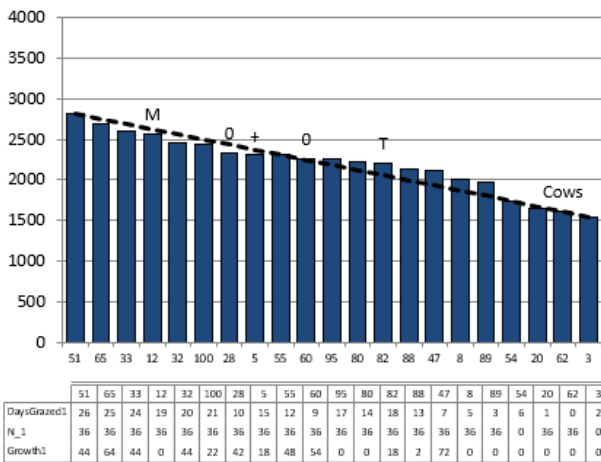


# 2021/22 Season Hub Weekly Farm Update Date: 06/01/2022

Herd size (cows)	160	Average Cover	2205
Target residual (kg DM/ha)	1550	Average Growth	39
Target pasture intake (kg DM/cow)	15	Farmlet area	61.1
Target Area offered (ha/day)	1.9	Target rotation length	32
Last week rotation avg	26	Target demand	39
Last week supp (kg DM/cow)	1.9	YTD supp (kg DM/cow)	268
Last week N (kg N/ha)	0	Fert N YTD	31
Milk yield	20.1	Effluent N YTD	5
Fat%	N	Last wk MS	W
Prot%	E	YTD MS/cow	E
SCC	X	YTD MS/ha	E
Average BCS	T	% less than BCS 4	K

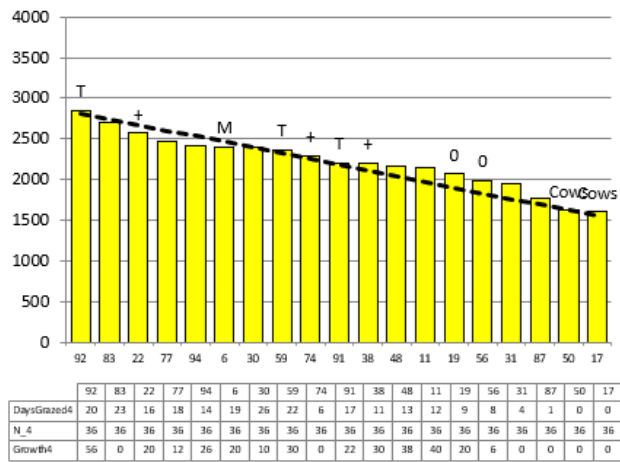
Herd size (cows)	160	Average Cover	2221
Target residual (kg DM/ha)	1550	Average Growth	25
Target pasture intake (kg DM/cow)	15	Farmlet area	55.1
Target Area offered (ha/day)	1.9	Target rotation length	29
Last week rotation avg	36	Target demand	44
Last week supp (kg DM/cow)	2.6	YTD supp (kg DM/cow)	260
Last week N (kg N/ha)	0	Fert N YTD	31
Milk yield	18.2	Effluent N YTD	7
Fat%	N	Last wk MS	W
Prot%	E	YTD MS/cow	E
SCC	X	YTD MS/ha	E
Average BCS	T	% less than BCS 4	K

### Low Impact Kale



Farmlet notes: Visual APC 2192, GR 42; offering 3 kg DM straight PKE inshed while wait on a new load of blend; aiming for a 30+ day rotation with supplements required; x8 bull matings recorded this week; APC holding but pasture growth is below demand without supplements; All new grass pdks back in rotation now

### Low Impact Fodder Beet



Farmlet notes: Visual APC 2214, GR 45; started PKE feeding at 1.6 kg DM /cow plus 1 bale baleage per day (1.3 kg DM/cow) to hold 30+ rotation; longer rotation this week as grazed italian area outside farmlet; APC has dropped since last week hence need for supplements; x2 bull matings recorded this week; no new grass paddocks back in rotation yet

Table 1: Key Herd Numbers 06/01/2022 – number of cows in each mob

DATE: 6 Jan 2022	Std Kale	LI Kale	Std FB	LI FB	Total
Cows on Farm	192	160	193	160	705
Milkers TAD	171	143	172	151	637
Milkers OAD	17	13	20	8	58
Sick OAD	4	4	1	1	10
Slips/empty/deaths	9	6	16	6	37



# 2021/22 Season

## Hub Weekly Farm Update

Date: 06/01/2022

### General Farm Information

Table 2: Key Weather and Feeding Numbers 6 January 2022

<b>Soil Temp (°C)</b> (weekly average)	19.0			
<b>Rainfall (mm)</b>	23.6 mm (since 23 Dec 2021)			
<b>Allocation Target</b> kg DM/cow/day	<b>Std. Kale</b>	<b>LI Kale</b>	<b>Std FB</b>	<b>LI FB</b>
<b>Milkers</b>	18 kg DM 15 kg pasture 3 kg DM PKE	18 kg DM 15 kg pasture 3 kg DM PKE	18 kg DM 16 kg pasture 1 kg DM PKE 1 bale baleage/day (1.1 kg DM/cow)	18kg DM 16 kg pasture 1.6 kg DM PKE 1 bale baleage/day (1.3 kg DM/cow)

### Key Decisions and Why?

- All herds will receive straight PKE for the next week as we wait on a new load of PKE:barley blend for the kale herds
  - the next batch of blend will be 70%PKE: 30% barley due to a supply issue with barley. The previous blend has been a 50:50 mix
- PKE is now required for the LI FB herd based on a drop in average pasture cover and the need for baleage top-ups throughout the week as pre-graze covers were below target for a pasture only diet
- Both fodder beet herds will be offered 1 bale baleage/day on top of the PKE to achieve the desired total DM intake of 18 kg/cow.day.
- No nitrogen to be applied to the Std farmlets again this week due to lack of soil moisture
- Topping will be minimised as conditions remain dry. The cows will be put back into paddocks to eat any good quality residual above 1600 kg DM/ha. Only paddocks with multi-round residual issues will be considered for topping
- Rotation length will remain at 30+ days for all herds.
- The LI FB herd currently has 2 fewer paddocks than the other herds due to their regressed paddocks being later established and not yet ready for grazing. They will have one grazing from the 'spare' paddock and x2 grazings from pdk 64 as compensation

### General Notes:

- Milk production for the Std FB herd took a dive this week following the grazing of the pdk we opted to pre-graze mow rather than conserve last week. Production for the kale herds remains more consistent with the inshed feeding option. The LIFB herd continues to fluctuate the most based on which paddock they are grazing.



# 2021/22 Season Hub Weekly Farm Update Date: 06/01/2022

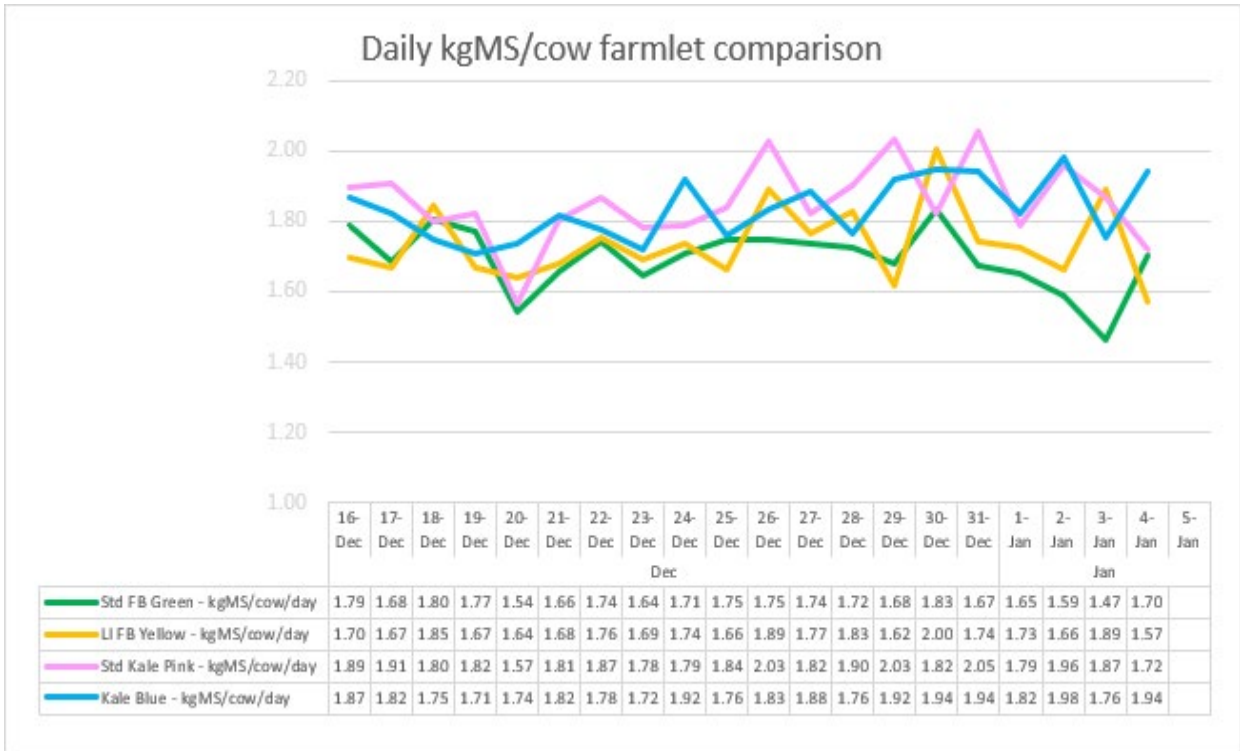


Figure 1: Daily milk solids per cow production for the last 3 weeks

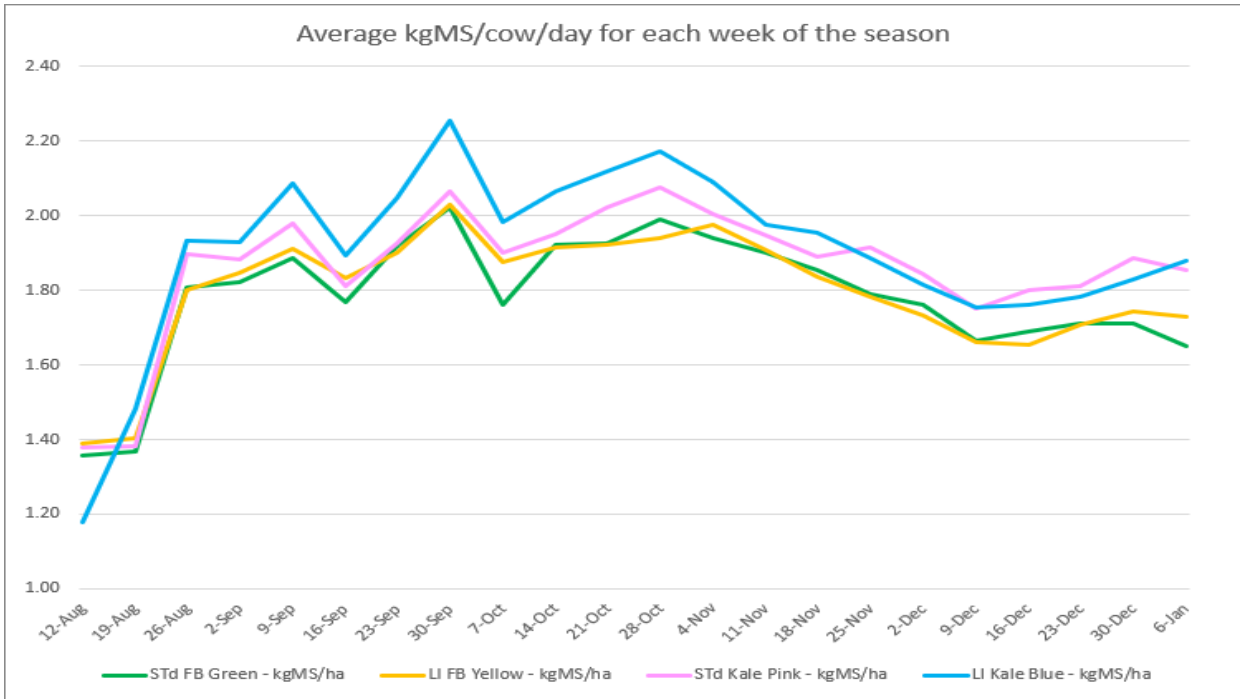


Figure 2: Weekly milk solids per cow production for the season to day

- The bulls continue to be rotated through the herds. Over the last week there have been x2 Std Kale, x8 LI Kale, x6 Std FB and x2 LI FB cows observed as cycling from tail paint removal
- There are still x2 new grass paddocks that are still too immature for grazing.

# 2021/22 Season Hub Weekly Farm Update Date: 06/01/2022

- Pasture growth through December and early Jan has been lower than the same period last year for all farmlets but specifically for the LI farmlets. Trends are very similar to the Woodlands growth rate

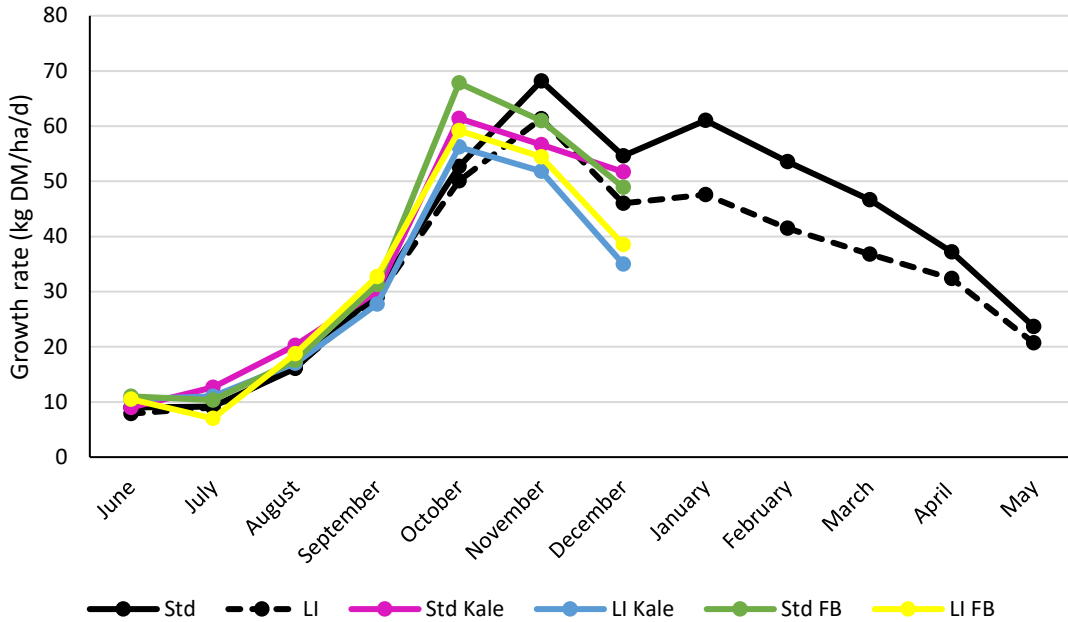


Figure 3: Average monthly pasture growth season to date

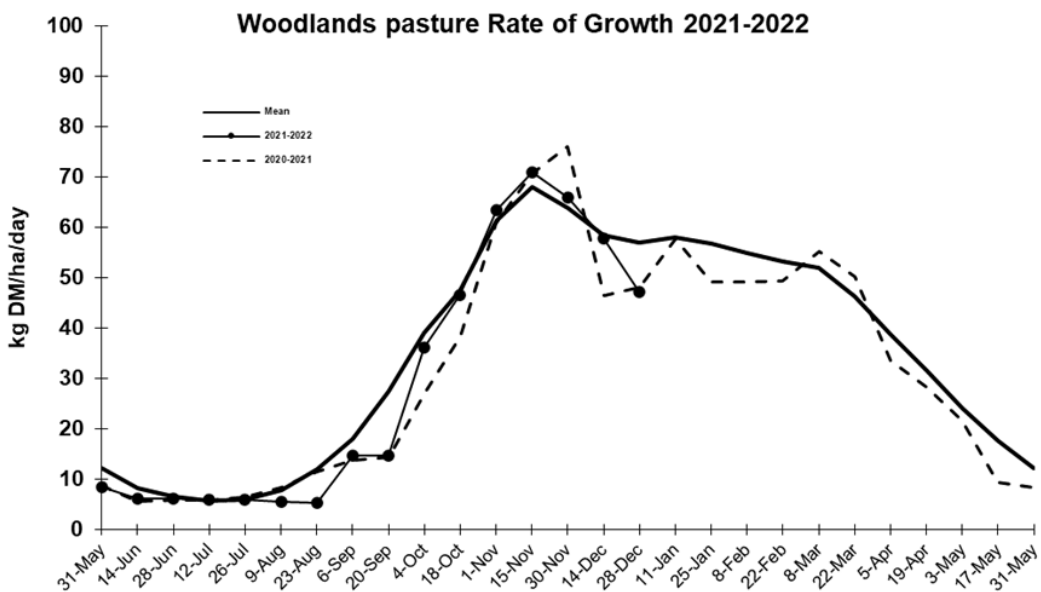


Figure 4: Woodlands growth rate summary season to date



# 2021/22 Season Hub Weekly Farm Update Date: 06/01/2022

- Cumulative rainfall season to date has dropped below last season by 30 mm. This deviation has occurred in the last 2 weeks. Soil temperature is still tracking 1-2 °C higher than the same period last year.

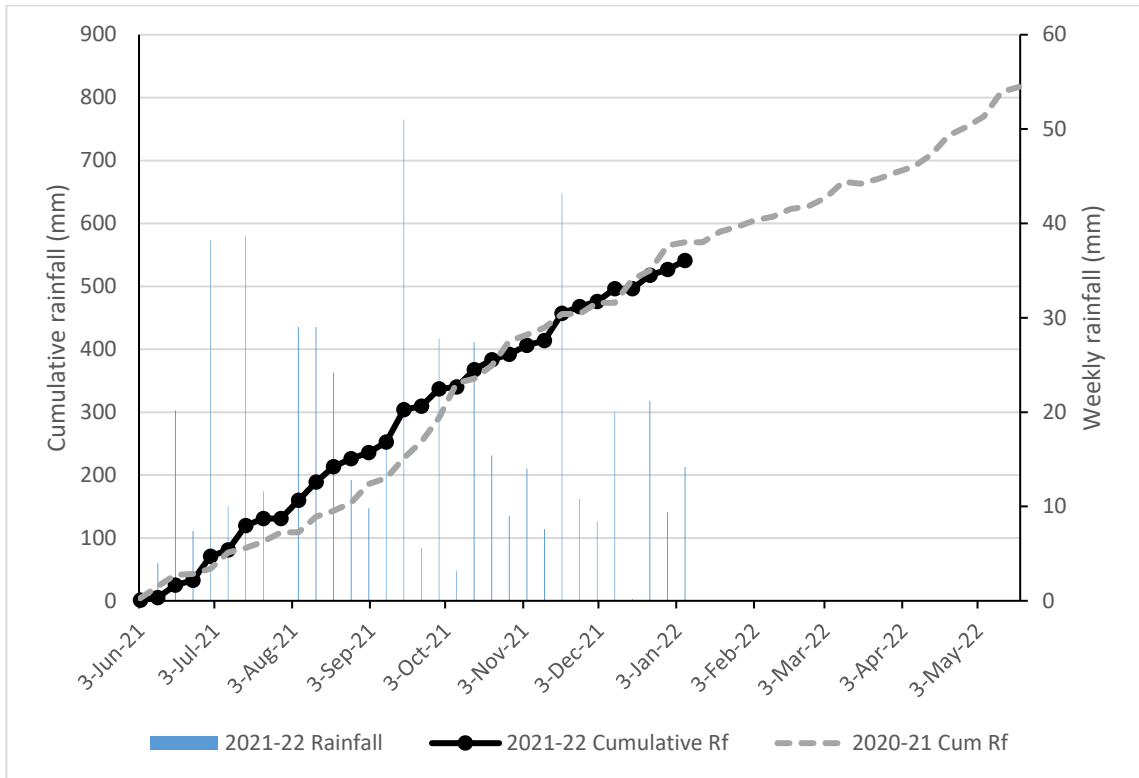


Figure 5: Season to date rainfall

- **Young Stock**
  - Calves will be weighed and drenched this week and split into 2 mobs with 120 healthy calves above 120 kg liveweight being sent off to grazing. The remainder will stay at the support block
  - DNA results on the replacements are in and of the 208 animals tested we have 186 with correct parentage (89%), 18 (9%) with dam only match and 4 (2%) that require retesting due to insufficient sample
- **Animal health**
  - We continue to get a couple of cases of lameness each week. Following checking and treating if required these animals hang out in the peno mob close to the shed on OAD milking until they are fit to go back to their respective mobs.

## SDH Research & Demonstration

- Like many others the science team have taken a well-deserved break over the last 2 weeks so there is nothing to report this week.

## General Farm Systems information



## 2021/22 Season Hub Weekly Farm Update Date: 06/01/2022

The project farm systems comparison has been designed to better understand crop-based wintering in relation to consequences for environmental impact and profit

- *The four herds are split evenly on age, BW / PW, calving date and breed to ensure the herds are as even as possible.*
- *Each herd allocated a farmlet corresponding to their herd tag colour Green, Blue, Yellow and Pink.*
- *Farmlets have paddocks allocated so each herd has equal walking distance from the shed and the same proportion of each soil type and equal proportions of pastures in the FVI trial (forage value trial – refer web site section on research).*

### Research Proposals

The SDH welcome research proposals for any sampling or research on the SDH, these are assessed by the Research Advisory Committee (RAC). Just send your request or ask for information via [louise.cook@southerndairyhub.co.nz](mailto:louise.cook@southerndairyhub.co.nz)

For more information check out the DairyNZ link:

<https://www.dairynz.co.nz/about-us/research/research-farms/southern-dairy-hub>