

Weekly Farm Summary 5 April 2023

Farm-system impacts of: Bales/Brassica vs Beet for winter AND Reducing N loss to water by 30%.

	Std Swede Pink	LI Bale Blue	Std FB Green	LI FB Yellow
Farmlet area including wintering	82.7	60.9	82.7	60.9
Peak cow numbers	222	137	221	135
Milking Area	73.8	55.1	73.8	55.1
Current Herd size (cows)	203	125	199	124
Pasture Stocking rate (current)	2.8	2.3	2.7	2.3
Winter Feed Milking supplement	Swede/Bale	Baleage	Beet 80 days	Beet 60 days
	In-shed feed 500kg/cow + silage as required			
Average Cover	2420	2543	2616	2351
Average Growth	60	57	64	42
Target rotation length	26	28	25	29
Last week act rotation (d)	27	29	27	30
Last week supp (kg DM/cow)	1.1	1.4	1.1	0.9
Average BCS	4.5	4.5	4.5	4.5
% of herd on priority feeding	13%	13%	17%	11%
Milk yield (L/cow)	17.1	17.5	15.9	16.3
Milk yield (kgMS/cow)	1.65	1.78	1.62	1.77
Nitrogen Cap kgN/ha/yr	180	50	180	50
% Nitrogen used (kgN/ha) YTD	80% (144kg)	106% (53kg)	83% (149kg)	100% (50kg)
Effluent N YTD	21	17	20	16
YTD supp (kg DM/cow)	907	546	801	559
YTD MS/cow	410	434	402	429
YTD MS/milk ha (YTD MS/farm ha)	1233 (1101)	1079 (976)	1203 (1074)	1051 (951)

Business Area	Current Status
Milk Production	Milk production reflects the rocket fuel pasture the cows are being offered. Latest pasture samples averaged 19.1% DM, 22.5% protein and 11.6 ME. LI herd cows continue to produce more per cow per day and are closing the gap in daily per ha production on the standard herds
Pasture & Feed	Growth rates continue to exceed demand and we are definitely in surplus territory now. Have dropped paddocks from all farmlets for baleage next week with inshed feeding only targeted to cows with higher BCS gain targets. Will be post mowing some paddocks to get residuals under control before heading into winter. No options to increase demand so working on strategies to control growth.
Animals	The first group of approximately 20 cows will be dried off next week. These consist mainly of light, early calving cows plus a couple of low yielders. Will manage as a separate group for a few days before drying off to drop yield.
Environment	Last nitrogen fertiliser has gone onto all farmlets. Effluent applications continuing to balance nutrient return across the farmlets. Season to date we have applied 20 kg N/ha to the Std herd effluent paddocks and 17 kg N/ha to the LI paddocks
Wintering	Our last baleage requirements were made on the support blocks this week so now starting the process of laying them out on crop paddocks. First baleage wintering paddocks have been shut. Calf sheds are all ready to go for spring and the calf paddocks have been made more secure with the addition of wire netting.
People	We are currently on the hunt for a farm assistant to join the team for the 2023-24 season. Have met with all the team individually this week to identify capability gaps and team goals.
Research	The urine collected last week has been applied to the plantain cultivar plot trial and measurement devices install to measure gaseous N losses

Milk Production

Principles of Milk Production management this week

Milk Production	Production remains very constant and a stark contrast to previous seasons. The differential between the LI and standard herds is getting closer together on a per ha basis as the end of the season approaches. Milk solid % has lifted this week, common for this time in the season.
Key Influences on Milk Production	Milk production is being positively impacted by the quality and quantity of pasture being offered. In some paddocks covers are so high the cows are being offered more than they can eat. MJME in the grass is lifting and it is being reflected in the vat.
Cow Management	Continue to have a 3'n2 milking frequency, however 20 cows will be dried off over the next 10 days. For 12 cows, BCS is not increasing as we would have liked, 2 cows milk yields have dropped away and if not treated at current production levels, dry cow treatment will not be successful. The 3 remaining staph positive cows will also be dried off to remove all staph cases from the vat.

	Std brassica/baleage Pink	LI Baleage Blue	Std Fodder beet Green	LI Fodder beet Yellow
kg Milksolids per cow this week / (last week)	1.65 (1.74)	1.78 (1.91)	1.62 (1.69)	1.77 (1.84)
kg Milksolids per ha this year / (same time last year)	1233 (1101)	1079 (976)	1203 (1074)	1051 (951)
% Var kg Milksolids per ha Season per ha to date vs last season to date	8.9	9.2	14.0	13.0
No. of Cows needing preferential feeding (% herd)	26 (13)	16 (13)	34 (17)	14 (11)
Animal Health peculiarities	More tender feet after the rain	More tender feet after the rain	More tender feet after the rain	More tender feet after the rain

Milk Production

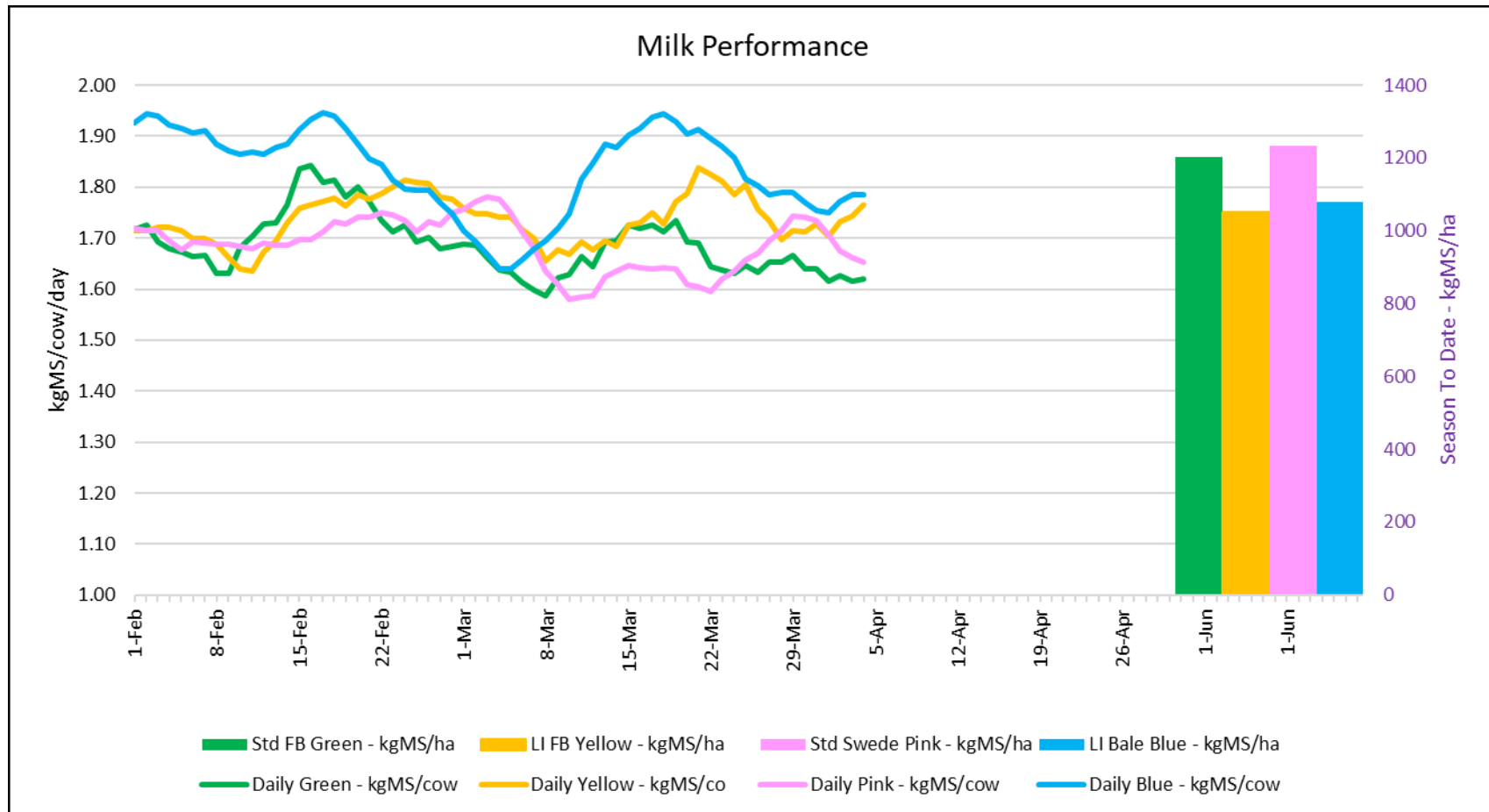


Figure 1: Milk solids production (/cow/day) plus cumulative season production (kg/ha) at 5th April 2023

Feed

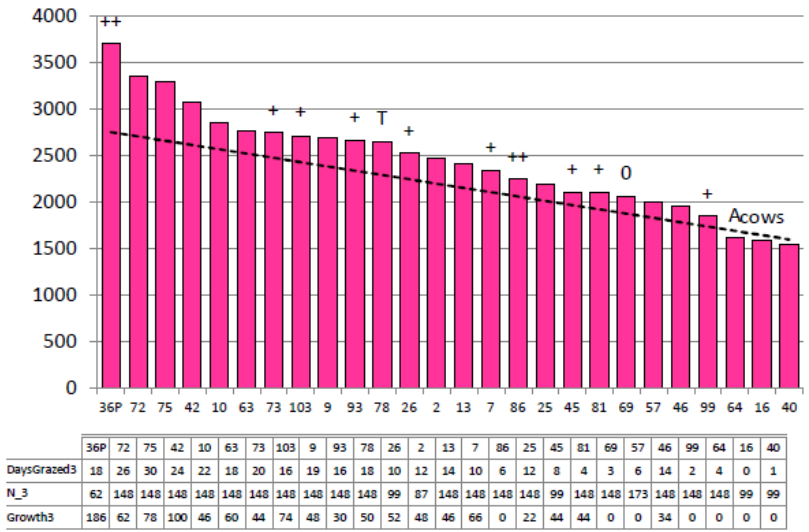
Principles of Feed management this week

Feed Quality	Feed quality has significantly improved and the milk production holding steady is a direct response to the quality across the whole farm. Latest pasture samples have averaged 22.5% crude protein, 44% NDF, 11.6 ME and DM 19.1%.
Growth Rate Management	High residuals being left due to high covers and growth rate above demand, however cows are having to do a lot more walking going back to tidy up paddocks. 7 paddocks to be pulled out of the round for baleage to get cows into more manageable covers sooner. We have no levers to pull to increase demand at this stage of the season so will be focusing on managing supply through conservation and post graze mowing as required to tidy residuals. Paddocks for winter baleage are now being dropped out of the rotation and nitrogen fertiliser applications have finished. The 8 paddocks earmarked for aeration have also been completed.
Nitrogen Strategy	All N fertiliser applications have been completed for the season.

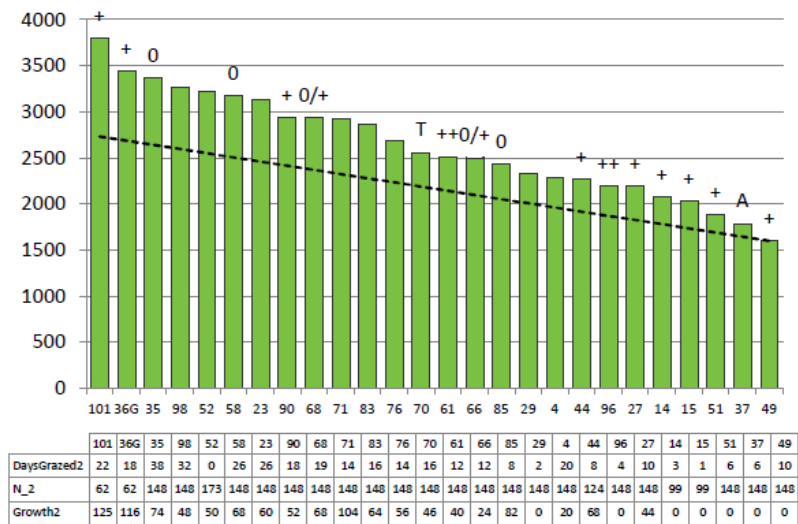
	Std brassica/baleage Pink	LI Baleage Blue	Std Fodder beet Green	LI Fodder beet Yellow
Quantity	Increasing	Increasing	Increasing	Increasing
Quality	Variable quality and DM%	Variable quality and DM%	Variable quality and DM%	Variable quality and DM%
Surplus Management	Paddocks coming out for conservation	Paddocks coming out for conservation	Paddocks coming out for conservation	Paddocks coming out for conservation
Deficit Management for coming week- kgDM (diff from last week)	-1.6 (-2.6)	-3.1 (-4.1)	-1.6 (-2.7)	-2.5 (-3.4)
Target Rotation Length (days)	26	28	25	29

Feed

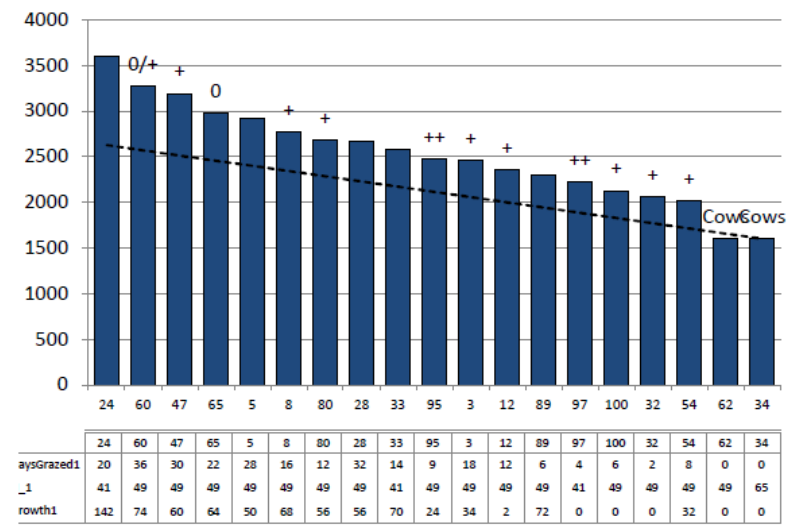
Standard Brassica/Baleage



Standard Fodder Beet



Lower Impact Baleage



Lower Impact Fodder Beet

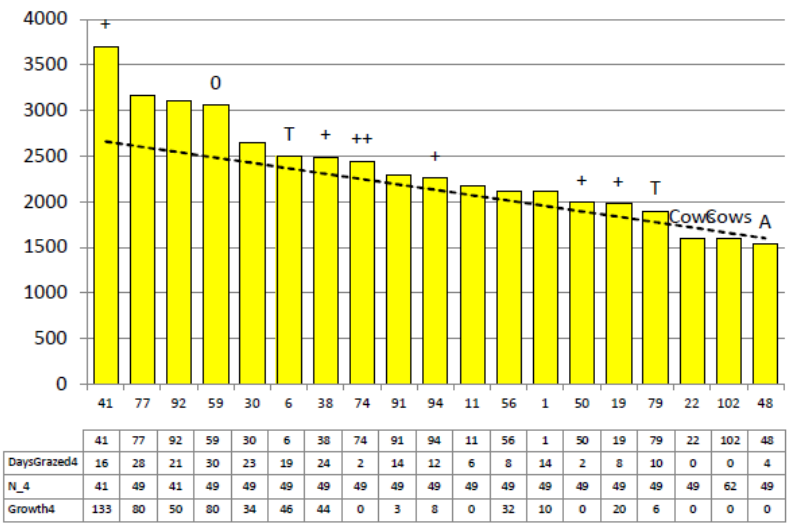


Figure 2: Feed Wedges as of 4th April 2023

Feed

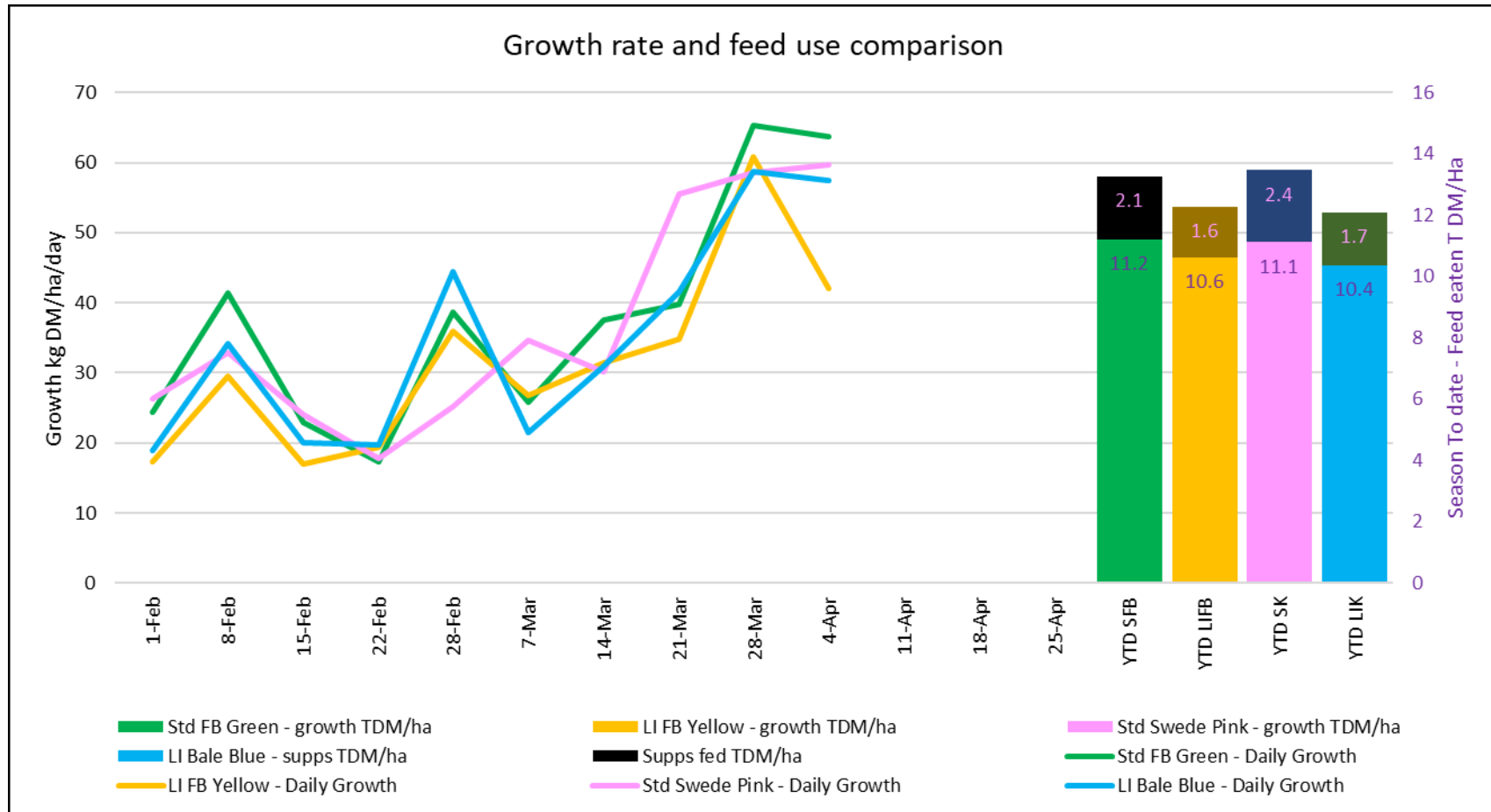


Figure 3: Weekly pasture growth rate at 4th April 2023 and year to date total feed eaten