

Weekly Farm Summary 3 May 2023

Farm-system impacts of: Bales/Brassica vs Beet for winter AND Reducing N loss to water by 30%.

	Std Swede Pink	LI Bale Blue	Std FB Green	LI FB Yellow
Farmlet area including wintering	82.7	60.9	82.7	60.9
Peak cow numbers	222	137	221	135
Milking Area	74.0	55.1	76.9	55.1
Current Herd size (cows)	175	105	160	112
Pasture Stocking rate (current)	2.4	1.9	2.1	2.0
Winter Feed Milking supplement	Swede/Bale	Baleage	Beet 80 days	Beet 60 days
	In-shed feed 500kg/cow + silage as required			
Average Cover	2530	2426	2481	2624
Average Growth	35	29	30	32
Target rotation length	51	55	53	57
Last week act rotation (d)	44	56	55	67
Last week supp (kg DM/cow)	3.1	1.8	2.9	3.8
Average BCS	4.6	4.5	4.4	4.5
% of herd on priority feeding	15%	7%	17%	12%
% dried off	9%	9%	13%	7%
Milk yield (L/cow)	11.3	12.2	11.2	10.8
Milk yield (kgMS/cow)	1.25	1.40	1.31	1.25
Nitrogen Cap kgN/ha/yr	180	50	180	50
% Nitrogen used (kgN/ha) YTD	81% (145kg)	110% (55kg)	84% (151kg)	106% (53kg)
Effluent N YTD	17	22	23	20
Profit/ha vs Pink herd	\$0	-\$504	-\$526	-\$491
YTD supp (kg DM/cow)	826	706	737	692
YTD MS/cow	444	469	451	465
YTD MS/milk ha (YTD MS/farm ha)	1334 (1194)	1167 (1056)	1298 (1207)	1140 (1032)
Business Area	Current Status			
Milk Production	Milk production has stabilised with consistent feeding across the herds. Currently milking 48 more cows than the same time last year & have 30 fewer cows dried off.			
Pasture & Feed	The plantain dominant pastures are continuing to create a few challenges with feed allocation with top up silage being required in several paddocks. We attribute this to the upright nature of the plantain and the low DM content resulting in an overestimation of mass using the plate meter. Dry cows being used to tidy up residuals with break of fresh pasture at the back of the paddocks. Inshed feeding of 2.5 kg PKE DM/cow.			
Animals	Dry cows have been consolidated into one mob and are grazing behind the herds. Lameness has settled but we are still getting a few cases of mastitis. Heifers returned from grazing this week and are at the support block till mid-May when they will come onto the milking platform in preparation for wintering.			
Environment	Effluent continues to be applied to Std paddocks with the aim of getting the pond down to 30% full by dry off			
Wintering	Winter paddocks are being set up with bales, bale feeders, portable water troughs and dividing fences.			
People	Tuesday was a sad day for everyone as Louise signed off from her GM role at SDH. Recruitment for a new GM is well underway. We are still looking for a farm assistant and calf rearer to join the team for next season so if you are interested in helping SDH deliver high quality science for our sector please get in contact.			
Research	Started grazing the farmlets in their new paddocks for next season and over the next 2 weeks cows will be moved between mobs to get the new herds set up before mid-May.			

Milk Production

Principles of Milk Production management this week

Milk Production	Milk production stabilized this week. The team have noticed a handful of cows that appear to be drying themselves off since we moved to OAD milking. With our final herd test of the season today we will use the information for imminent drying off decisions. Our decision rules state that any cow producing 5 litres or less for a week should be dried off.
Key Influences on Milk Production	We have been topping up cows grazing the new grass paddocks with silage, based on pasture remaining mid-afternoon. Indications from the team are that DM availability in these paddocks is potentially being over-estimated based on cow behaviour. The LI FB herd required a higher proportion of silage through one of their new grass paddocks this week which has likely impacted on their production
Cow Management	Dry cows have been mobbed together and are following milkers to tidy up residuals. They are also being offered a fresh break of pasture in the back of the paddocks they are grazing.

	Std brassica/baleage Pink	LI Baleage Blue	Std Fodder beet Green	LI Fodder beet Yellow
kg Milksolids per cow this week / (last week)	1.25 (1.35)	1.40 (1.48)	1.31 (1.28)	1.25 (1.34)
kg Milksolids per ha this year / (same time last year)	1334 (1230)	1167 (1062)	1298 (1145)	1140 (1006)
% Var kg Milksolids per ha Season per ha to date vs last season to date	8.4	9.9	13.4	13.4
No. of Cows needing preferential feeding (% herd)	26 (15)	7 (7)	27 (17)	13 (12)
Animal Health peculiarities	None	None	None	None

Milk Production

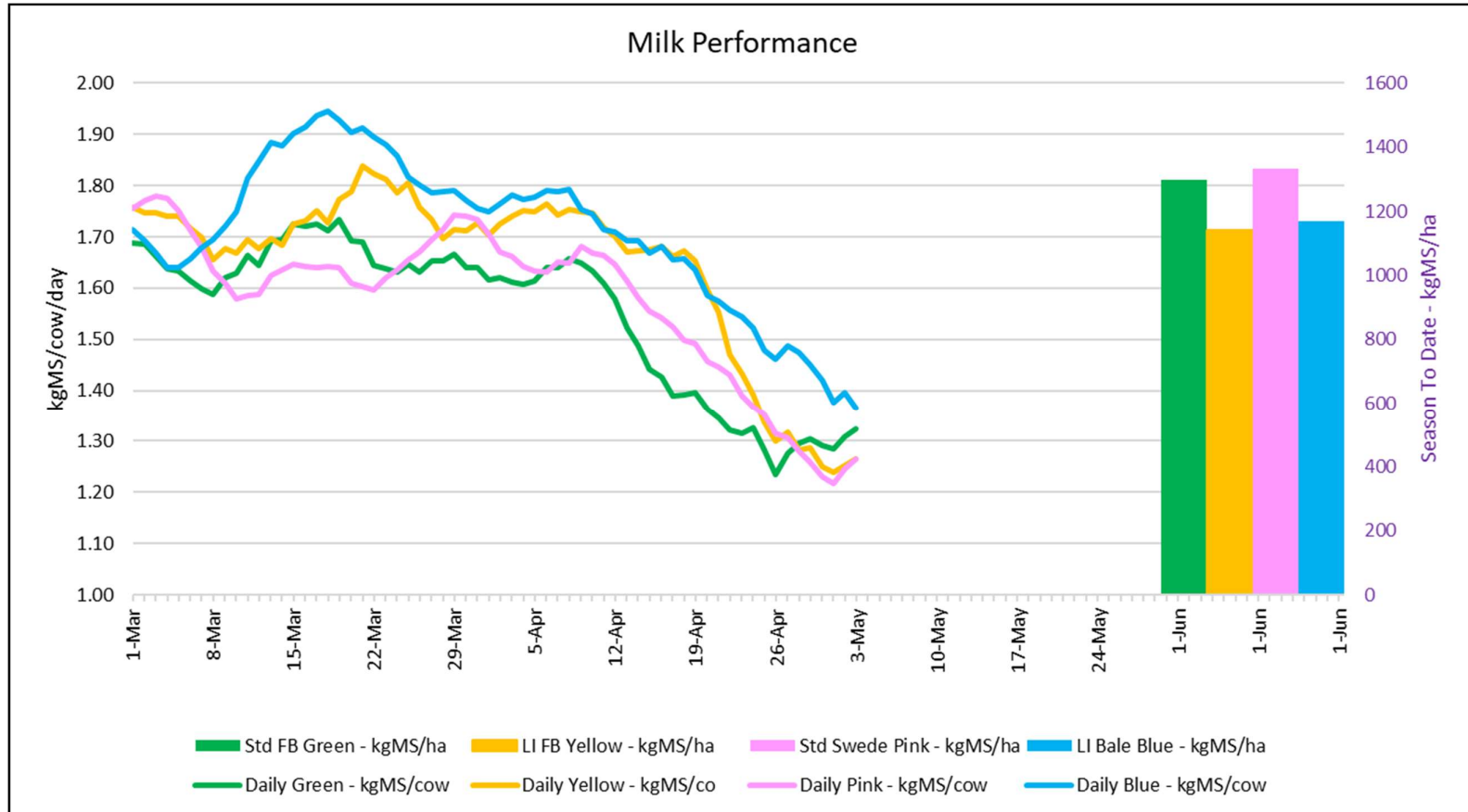


Figure 1: Milk solids production (cow/day) plus cumulative season production (kg/ha) at 2nd May 2023

Feed

Principles of Feed management this week

Feed Quality	The major factor affecting intake now is the DM% of the pastures, particularly the new grass paddocks with a high plantain content. All paddocks a high quality with very little dead in the base. We still haven't got to the better-quality silage in the summer stack so what we are feeding is lower quality and high DM. With heifers now back on farm we will utilize the silage to keep them fully fed and use good quality baleage to top up the milkers if required.
Growth Rate Management	With the decline in pasture growth and a mob of 70 dry cows the mower has been put away for the season. At our current rotation length, average pasture cover and supplement in the system we are in a good feed situation but will be closely monitoring average pasture covers and residuals ahead of the heifers coming onto the milking platform in 10 days time.
Nitrogen Strategy	Effluent continues to be applied to Std paddocks with the aim of getting the pond down to 30% full by dry off.

	Std brassica/baleage Pink	LI Baleage Blue	Std Fodder beet Green	LI Fodder beet Yellow
Quantity	APC holding	APC holding	APC holding	APC holding
Quality	Maintaining	Maintaining	Maintaining	Maintaining
Surplus Management	Pushing feed forward	Pushing feed forward	Pushing feed forward	Pushing feed forward
Supplement for coming week- kgDM (diff from last week)	2.5 (-0.4)	2.5 (+0.7)	2.5 (-0.4)	2.5 (-1.3)
Target Rotation Length (days)	51	55	53	57

Feed

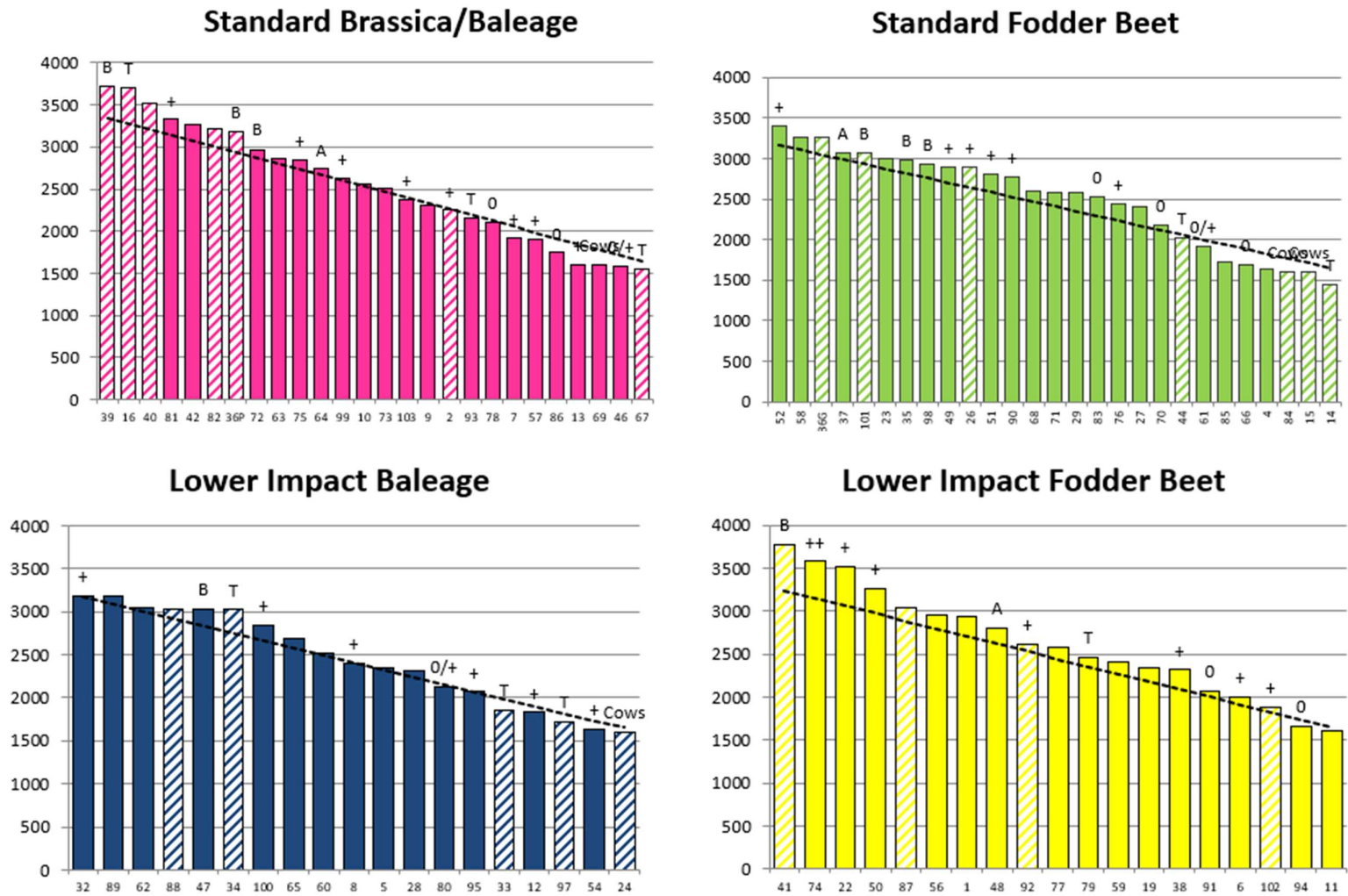


Figure 2: Old Farmler Feed Wedges as of 2 May 2023

Feed

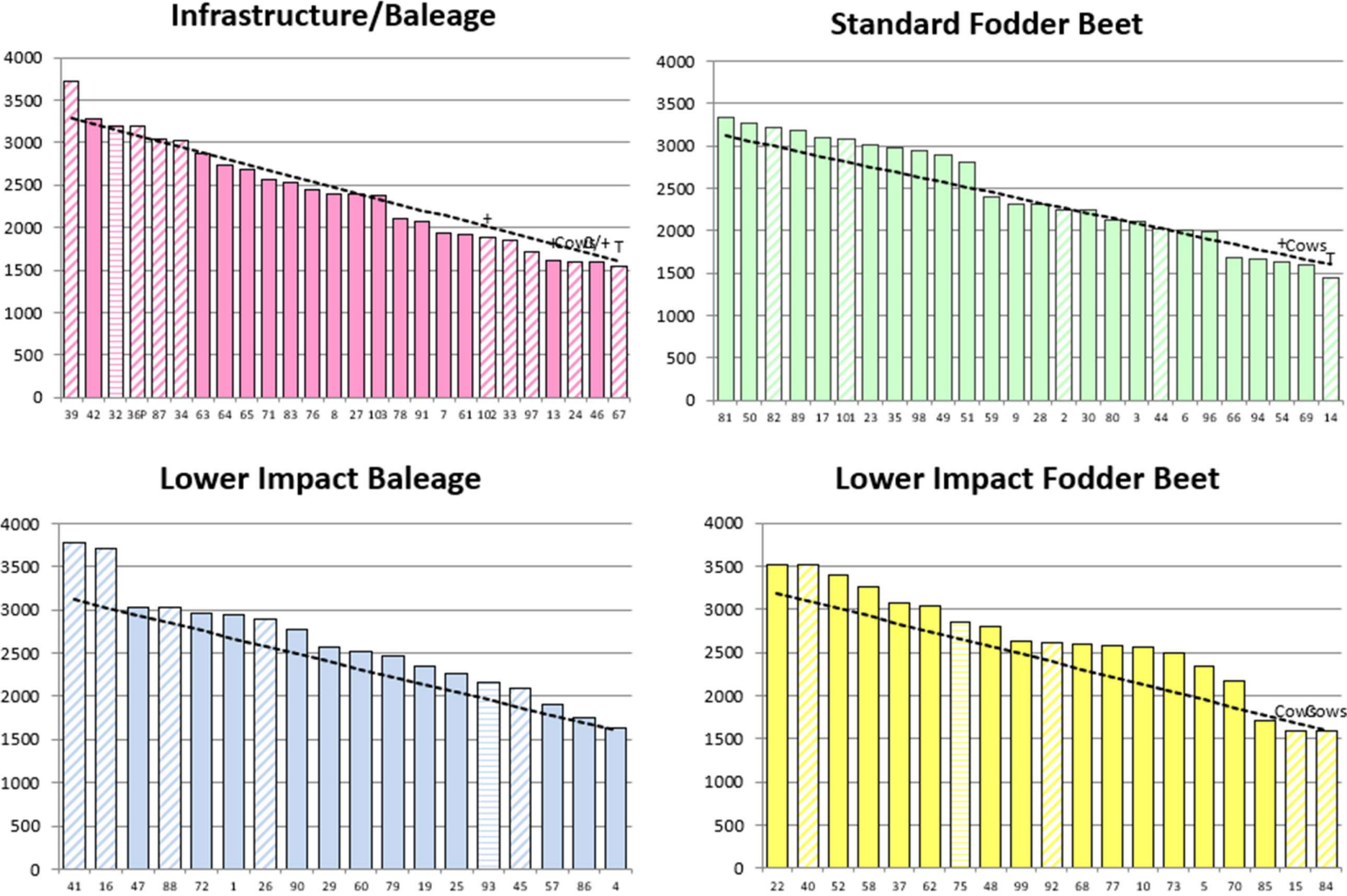


Figure 3: New Farmlet Feed Wedges as of 2 May 2023

Feed

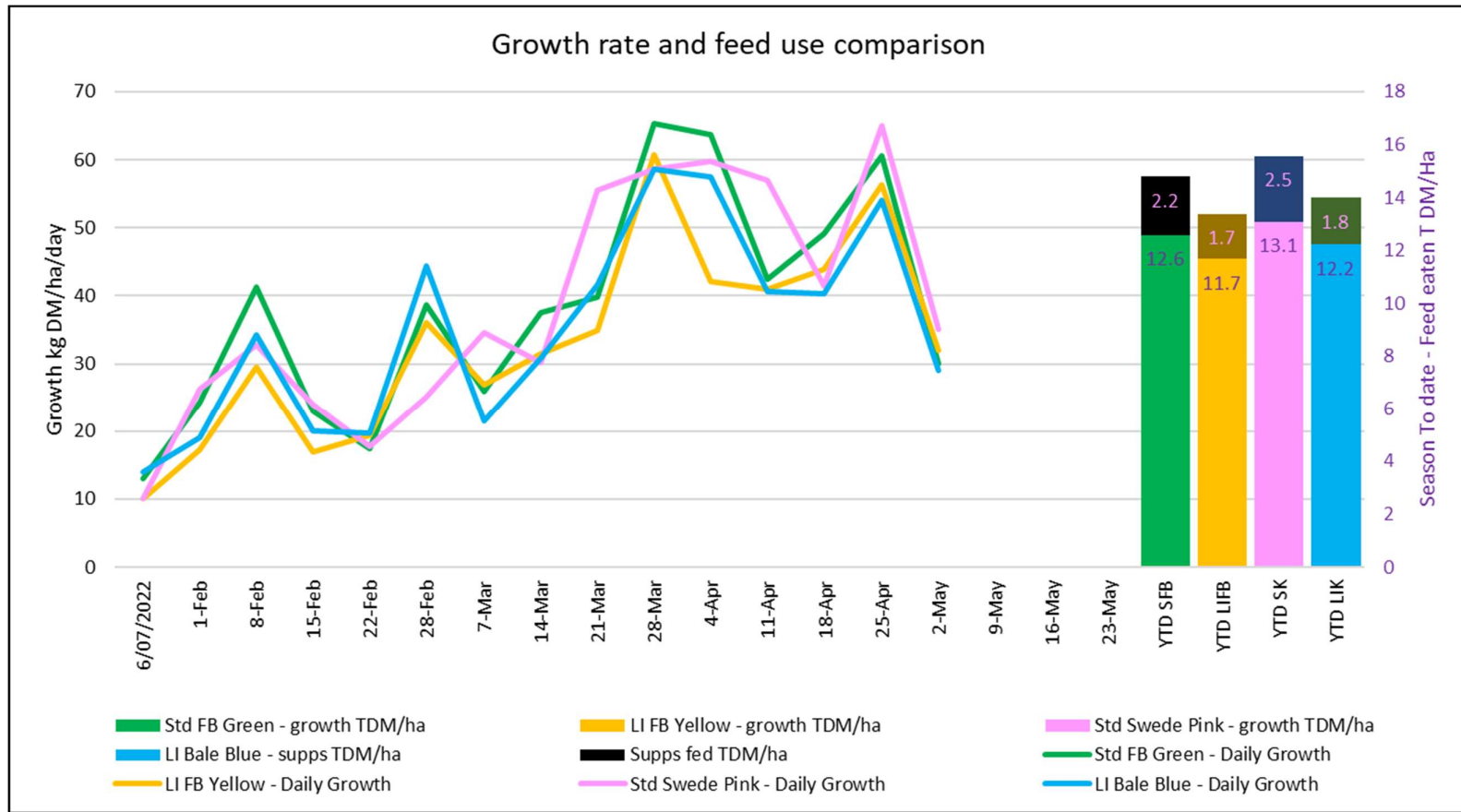
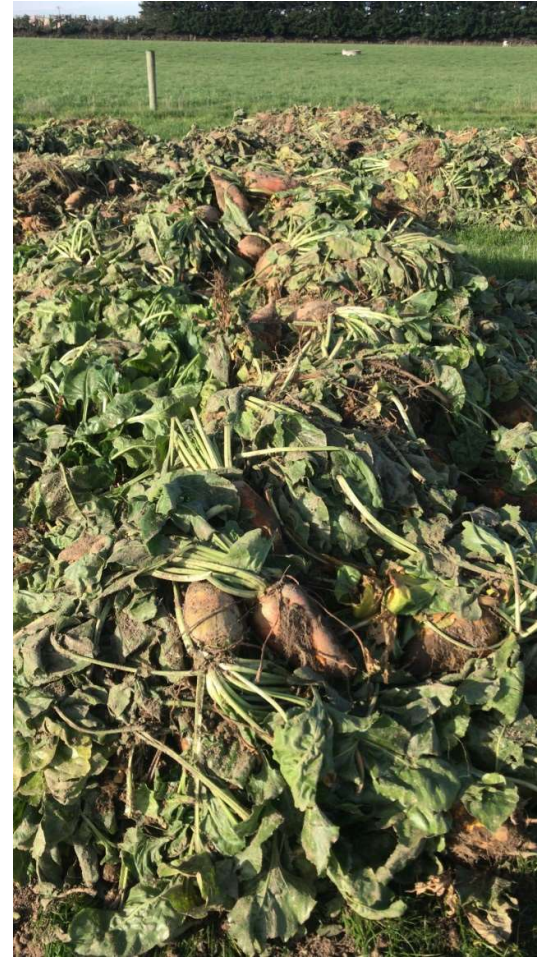


Figure 4: Weekly pasture growth rate at 2 May 2023 and year to date total feed eaten

The week in pictures



Lifting fodder beet in the transition zones of paddocks in preparation for winter

The week in pictures



LI Baleage (Left) and Std Baleage herds grazing new grass paddocks