

Weekly Farm Summary 28 February 2024

Farm-system impacts of: Bales vs Beet for winter AND Reducing N loss to water by 30%.

	Std Baleage Blue	LI Baleage Pink	Std FB Green	LI FB Yellow
Farmlet area including wintering	52.2	93.6	86.9	62.2
Peak cow numbers	139	208	233	136
Milking Area	52.2	93.6	75.3	55.0
Current Herd size (cows)	139	208	231	135
Pasture Stocking rate (current)	2.7	2.2	3.1	2.5
Winter Feed Milking supplement	Baleage	Baleage	Beet	Beet
	In-shed feed 500kg/cow + silage as required			
Average Cover (kgDM/ha)	2606	2431	2451	2537
Average Growth (kgDM/ha/d)	76	54	53	58
Target rotation length (d)	27	32	26	28
Last week actual rotation (d)	26	35	26	28
Last week supp (kgDM/c)	2.2	2.5	1.8	1.8
Latest Average BCS	4.6	4.4	4.7	4.7
% of herd on priority management	22.3%	35.1%	29.4%	29.6%
% in Milk	100%	100%	100%	100%
7-day Average Milk yield (L/cow)	17.2	16.9	18.2	18.8
7-day Average Milk yield (kgMS/c)	1.71	1.68	1.80	1.86
Nitrogen Cap kgN/ha/yr	180	50	180	50
% Nitrogen used (kgN/ha) YTD	66% (119kg)	82% (41kg)	70% (126kg)	90% (45kg)
Effluent N YTD	9	12	12	12
YTD Pasture growth TDM/ha	11.8	10.3	11.6	10.4
YTD supp (kg DM/c)	471	420	536	423
YTD MS/c	358	352	372	385
YTD MS/milk ha (YTD MS/farm ha)	1183 (1253)	872 (872)	1241 (1075)	991 (876)
Focus area	Current Status			
Milk Production	The excellent quality and quantity of pasture sees the cows still holding well, 5500 milksolids ahead for the year (4%). The vat the baleage farmlets are supplying is at 94% excellence for the season, a really positive reflection on the efforts of the team.			
Pasture & Feed	Excellent growth, more than demand: 10-30 kg/ha/day surplus sees some paddocks being shut up for baleage to maintain the correct pre grazing targets. Inshed feeding dialled back to minimum.			
Animals	3 Mastitis cows picked up from herd test being treated and 6 new lame cows, mainly white line and from across all herds. Biotin is now included in the trace mineral mix for hoof health but this is not a quick fix. Currently assessing locomotion scores to pick potential lame cows up early. R2s have been weighed and are slightly behind their average target weight so a management plan is being put in place to get them back on track.			
Environment	Low impact farmlets have their 4 th and final application going on, standard farmlets have their 6 th and penultimate applications going on. Effluent pond is at 31%, below trigger levels for double runs, so dropping back to single applications as is feasible.			
Wintering	Waiting on final scan results next week to finish culling and dry off decisions and finalise the autumn feed budgeting. We have made a lot more baleage than planned, so plan to use this to milk more cows for longer while still being able to push the round length out/ drop out wintering and springer paddocks.			
People	Shout out for Venura this week, he is nearing completion of two level 6 ITO courses, all while working full time and being a father of three- a super effort. One staff confirmed as moving on at the end of the season, we wish them all the best in their career next steps and look forward to seeing the next farming superstar join the team. If you are looking for new staff next year, look over the HR resources available in the people section of the DairyNZ website- a great resource			
Research	Great excitement amongst the science team this week as Teresa nears perfection of the new data systems she has been working on to make data management more efficient for the whole team.			

Milk production

Principles of Milk Production management this week

<p>Milk production</p>	<p>Herds remain relatively stable mostly due to plenty of good quality pasture available for this time of year. Soil temperature crept up slightly this week and the growth rates all lifted significantly due to good temperatures and excellent soil moisture. Cows are being offered 18.5- 19 kg DM top quality pasture, with the work monitoring pre-grazing targets, conserving surplus and topping the occasional poor residual really paying off.</p>
<p>Key Influences of Milk Production</p>	<p>Despite the current pasture quality being very good, we do still see a change in production when cows graze paddocks where there is a range of sown and non-sown pasture species. Some paddocks on the lower terrace are particularly bad for non-sown grass species in their swards.</p>
<p>Cow Management</p>	<p>No change. TAD milking frequency with continued monitoring cow BCS on the fortnightly basis and adjusting the priority feeding and OAD milking groups as required. Eagerly awaiting the second scan results on the 6th March to implement our autumn BCS management strategies centered around priority feeding, milking frequency and cow specific dry off considerations.</p>

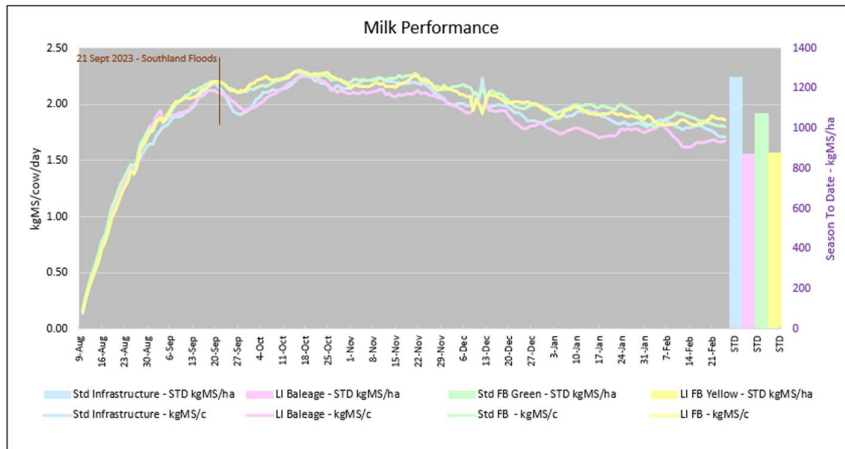


Figure 1. Milksolids per cow/day STD and kgMS/ha STD

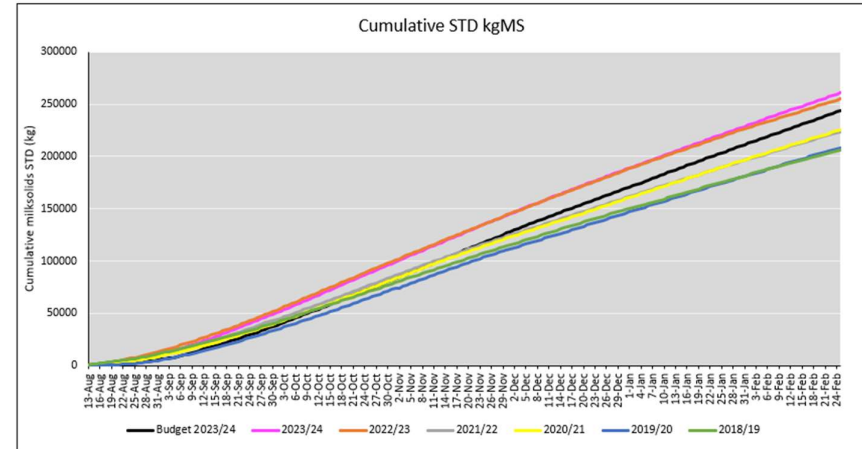


Figure 2. Cumulative kg Milksolids & Budget season to date

Feed Management

Principles of Feed management this week

<p>Feed Quality</p>	<p>Due to different stocking rates the pre-graze targets between the herds range from 2950 to 3000 based on the current rotation length. Overall pastures are denser, lusher and have great amounts of clover and plantain than earlier in the season. Early decision making on paddocks where quality and quantity will allow for an extra feed is being implemented for the farmlets on the fastest rotation.</p>
<p>Growth Rate</p>	<p>Good soil temperatures, soil moisture and some warm days are still leading to growth rates exceeding demand overall, there has been a slight increase in temperatures this week and a slight decrease forecast next week. Will remain on the same rotation length as having the fast-growing new grasses coupled with demand being under average growth rate, we don't want to go any slower. Two low FVI paddocks are scheduled to be grazed, sprayed out and regrassed as part of our autumn regrassing program. Aeration of some affected paddocks still need to be done as timing and conditions allow.</p>
<p>Nitrogen Strategy</p>	<p>Standard farmlets are beginning their 6th application of N fertiliser for the season. This will likely be the last application of N to the standard paddocks for the season. Given the current feed situation on the LI farmlets, and the plan for autumn regrassing and aeration, the final round of N application of 12.5 kg N/ha to these farmlets is underway.</p>

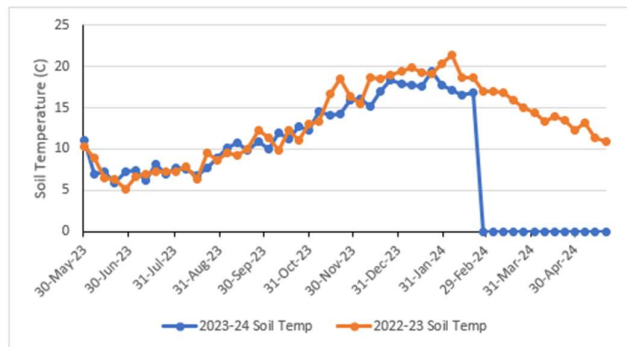


Figure 3. Soil temperatures 2023-24 vs 2022-23

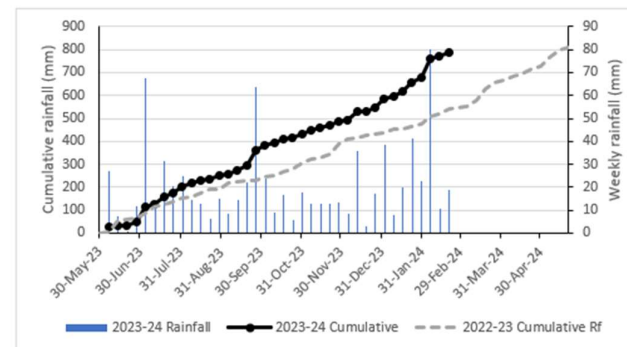


Figure 4. Season to date rainfall compared with cumulative rainfall 2022-23

Feed Wedges

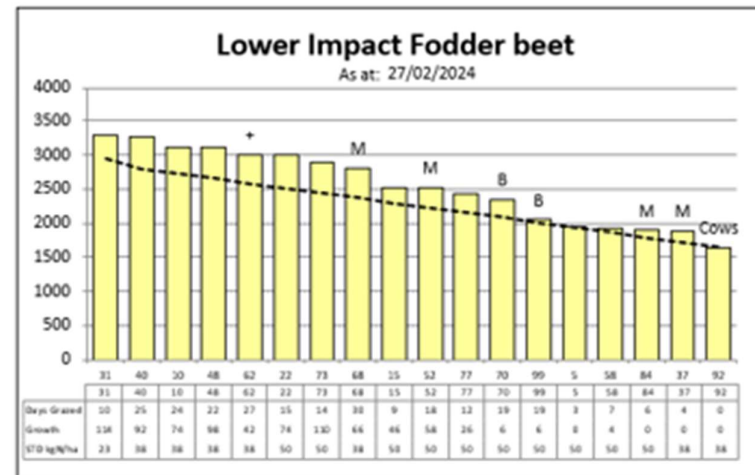
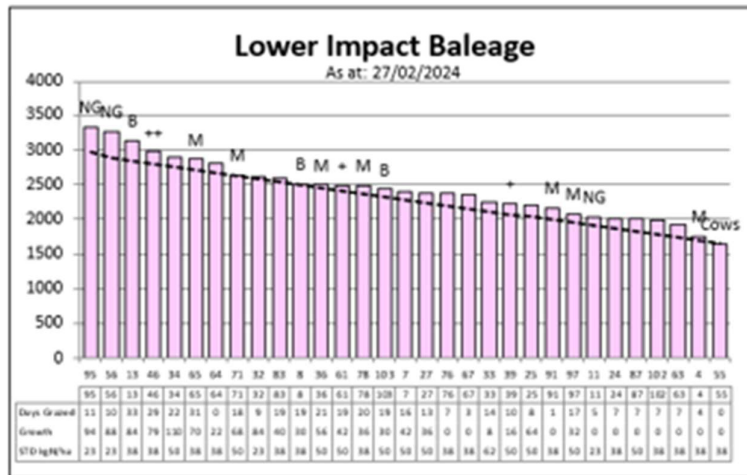
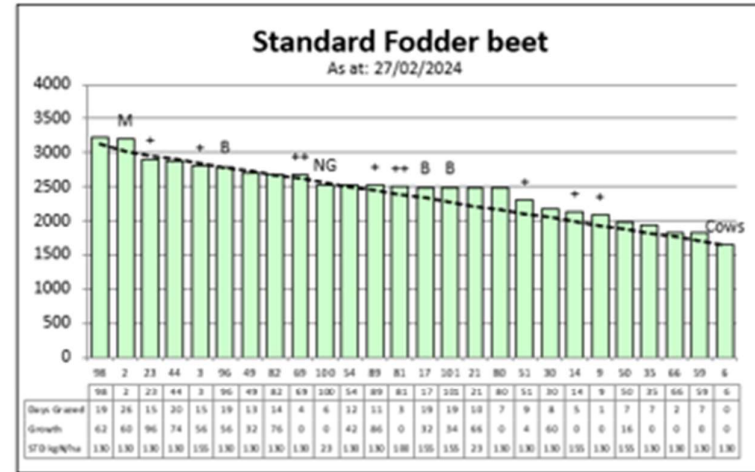
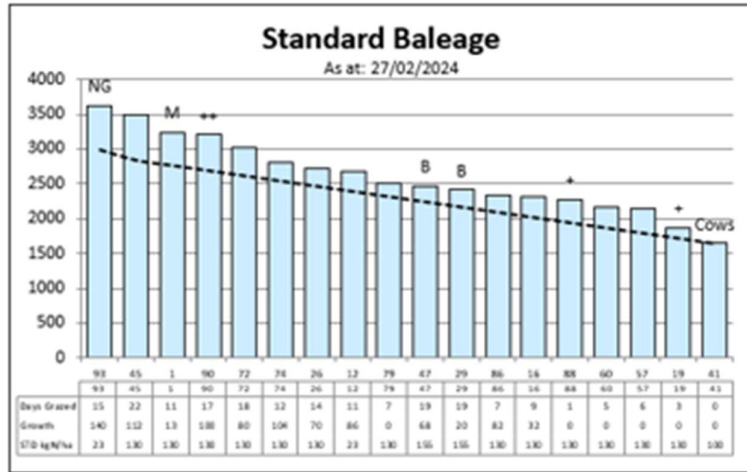


Figure 5. Plate meter feed wedges as at 27th February 2024 (NB: We have changed the name of the blue herd from Standard Infrastructure to Standard Baleage)