

Weekly Farm Summary 27 April 2023

Farm-system impacts of: Bales/Brassica vs Beet for winter AND Reducing N loss to water by 30%.

	Std Swede Pink	LI Bale Blue	Std FB Green	LI FB Yellow
Farmlet area including wintering	82.7	60.9	82.7	60.9
Peak cow numbers	222	137	221	135
Milking Area	74.0	55.1	76.9	55.1
Current Herd size (cows)	175	105	160	112
Pasture Stocking rate (current)	2.4	1.9	2.1	2.0
Winter Feed Milking supplement	Swede/Bale	Baleage	Beet 80 days	Beet 60 days
	In-shed feed 500kg/cow + silage as required			
Average Cover	2561	2419	2571	2601
Average Growth	65	54	61	56
Target rotation length	51	55	53	57
Last week act rotation (d)	51	50	46	56
Last week supp (kg DM/cow)	4.2	1.3	5.8	1.7
Average BCS	4.5	4.5	4.5	4.5
% of herd on priority feeding	15%	7%	17%	12%
% dried off	9%	9%	13%	7%
Milk yield (L/cow)	11.8	13.2	11.4	12.0
Milk yield (kgMS/cow)	1.35	1.48	1.28	1.34
Nitrogen Cap kgN/ha/yr	180	50	180	50
% Nitrogen used (kgN/ha) YTD	81% (145kg)	110% (55kg)	84% (151kg)	106% (53kg)
Effluent N YTD	16	20	19	18
Profit/ha vs Pink herd	\$0	-\$504	-\$526	-\$491
YTD supp (kg DM/cow)	826	706	737	692
YTD MS/cow	438	462	444	458
YTD MS/milk ha (YTD MS/farm ha)	1314 (1176)	1148 (1039)	1278 (1188)	1123 (1016)
Business Area	Current Status			
Milk Production	Disappointingly milk yield has fallen across all herds this week. Post graze residuals have tightened up and with the cooler wet weather impacting utilisation it is likely ME intake has impacted on production in some paddocks.			
Pasture & Feed	While pre-graze pasture mass looks good a low DM content is potentially resulting in an overestimation of DM availability (especially in the new grass paddocks with a high plantain and clover content) Inshed feed will be increased to 2.5 kg/cow.day average with silage used to ensure DM intakes are being consistently achieved. Topping will continue as required to clean out old clumps left in previous grazings.			
Animals	51 cows were dried off at the beginning of the week (combination of lights, high SCC and lames) and once dried down will join the 22 earlier dries which have been following milkers. Currently waiting on results of liver samples taken from cull cows last week to determine what pre-winter minerals are required.			
Environment	Effluent continues to be applied to Std paddocks with the aim of getting the pond down to 30% full by dry off			
Wintering	Crop grazing plans are sorted for transitioning and the first 6 weeks of winter; Now we are focusing on the later stages of winter when mob numbers will start decreasing as springers are removed.			
People	Last night we celebrated the significant contribution Louise has made to the continuous improvement in farm performance of the farm and development of the team over the last 4 years.			
Research	Reallocating cows to farmlets in preparation for the new system comparison. Paddocks have been re-randomised and we will start grazing the new wedges next week			

Milk Production

Principles of Milk Production management this week

Milk Production	Milk production has continued to decline this week following the move to OAD milking, with production now ranging from 1.3 to 1.5 kg MS/cow/day.
Key Influences on Milk Production	Changes in pasture DM content and the introduction of silage is likely impacted on total ME intake with residuals also tightening up this week. While we want to achieve tidy residuals in the last grazing for the season this needs to be done by protecting milk production and BCS gain.
Cow Management	51 cows were dried off at the beginning of the week (combination of lights, high SCC and lames) and once dried down will join the 22 earlier dries which have been following milkers. All other cows on OAD milking with priority inshed feeding continuing to the cows having to gain the most BCS before dry off.

	Std brassica/baleage Pink	LI Baleage Blue	Std Fodder beet Green	LI Fodder beet Yellow
kg Milksolids per cow this week / (last week)	1.35(1.49)	1.48 (1.63)	1.28 (1.39)	1.34 (1.65)
kg Milksolids per ha this year / (same time last year)	1314 (1292)	1148 (1128)	1278 (1257)	1123 (1103)
% Var kg Milksolids per ha Season per ha to date vs last season to date	8.8	10.0	13.7	13.6
No. of Cows needing preferential feeding (% herd)	26 (15)	7 (7)	27 (17)	13 (12)
Animal Health peculiarities	None	None	None	None

Milk Production

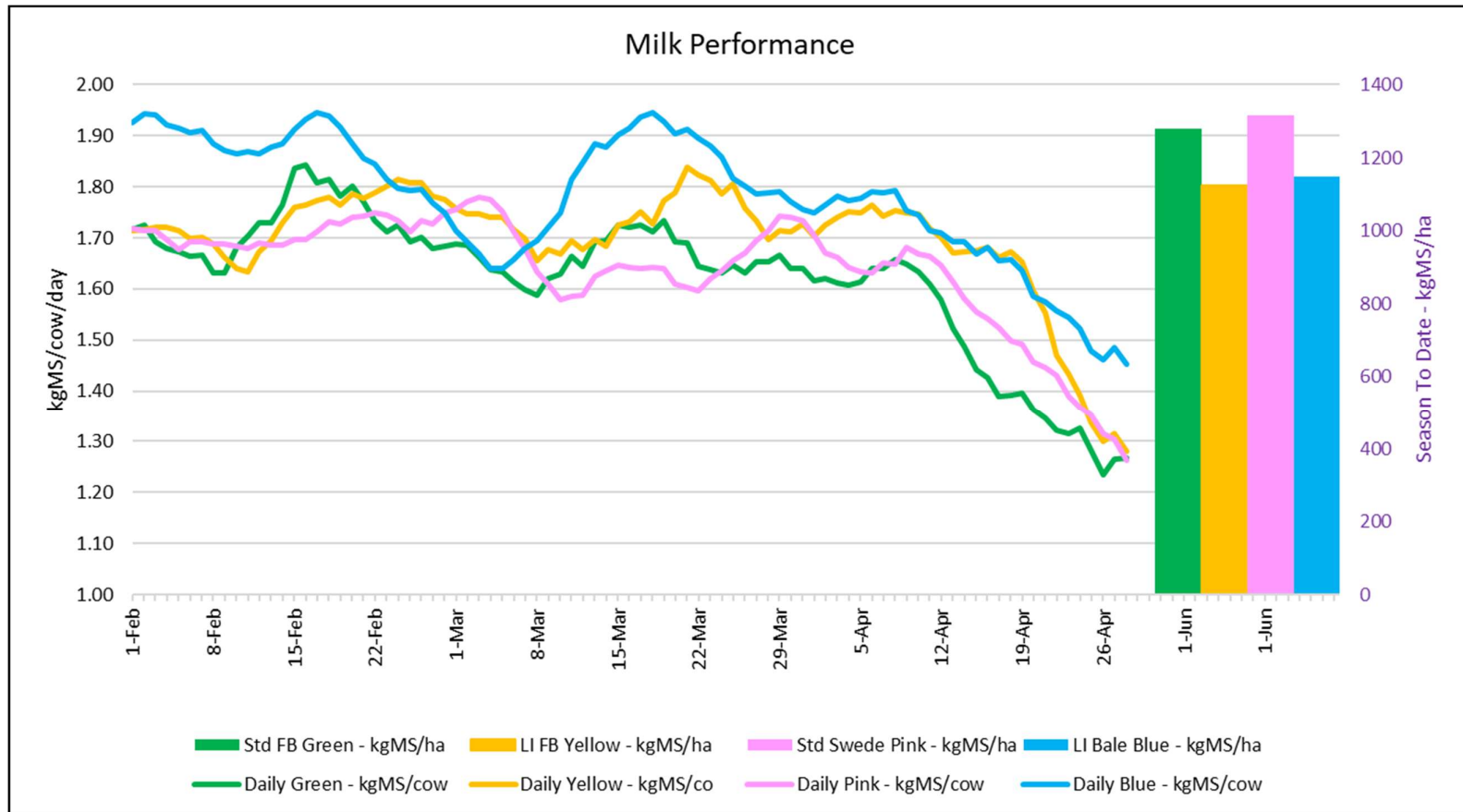


Figure 1: Milk solids production (cow/day) plus cumulative season production (kg/ha) at 25th April 2023

Feed

Principles of Feed management this week

Feed Quality	DM % since the start of April has averaged 16.6% but individual paddocks have been as low as 13.6%. Below 15% DM cows will struggle to consume sufficient DM to meet intake targets. The pastures are fully vegetative with lots of ryegrass, clover and plantain, especially in the new grass paddocks which are continuing to grow rapidly. Despite ample high quality pasture available the herds are still showing a preference for the silage even though it is not great quality.
Growth Rate Management	We are now targeting setting the farm up for next season so aiming to achieve tidy residuals either by following the milkers with the dry mob or topping. Currently identifying paddocks to use for colostrum cows in spring so managing their grazing to achieve desired pre-graze mass. New grass paddocks will be targeted for a late season grazing to ensure they are not at the top of the wedge at the start of spring. Last baleage for the season was conserved from the support block and surplus paddocks on the milking platform.
Nitrogen Strategy	Effluent continues to be applied to Std paddocks with the aim of getting the pond down to 30% full by dry off.

	Std brassica/baleage Pink	LI Baleage Blue	Std Fodder beet Green	LI Fodder beet Yellow
Quantity	APC holding	APC holding	APC holding	APC holding
Quality	Maintaining	Maintaining	Maintaining	Maintaining
Surplus Management	Mowing to slow growth when required	Mowing to slow growth when required	Mowing to slow growth when required	Mowing to slow growth when required
Supplement for coming week- kgDM (diff from last week)	3.5 (0.9)	3.0 (+1.7)	2.5 (-3.3)	3.0 (+1.7)
Target Rotation Length (days)	51	55	53	57

Feed

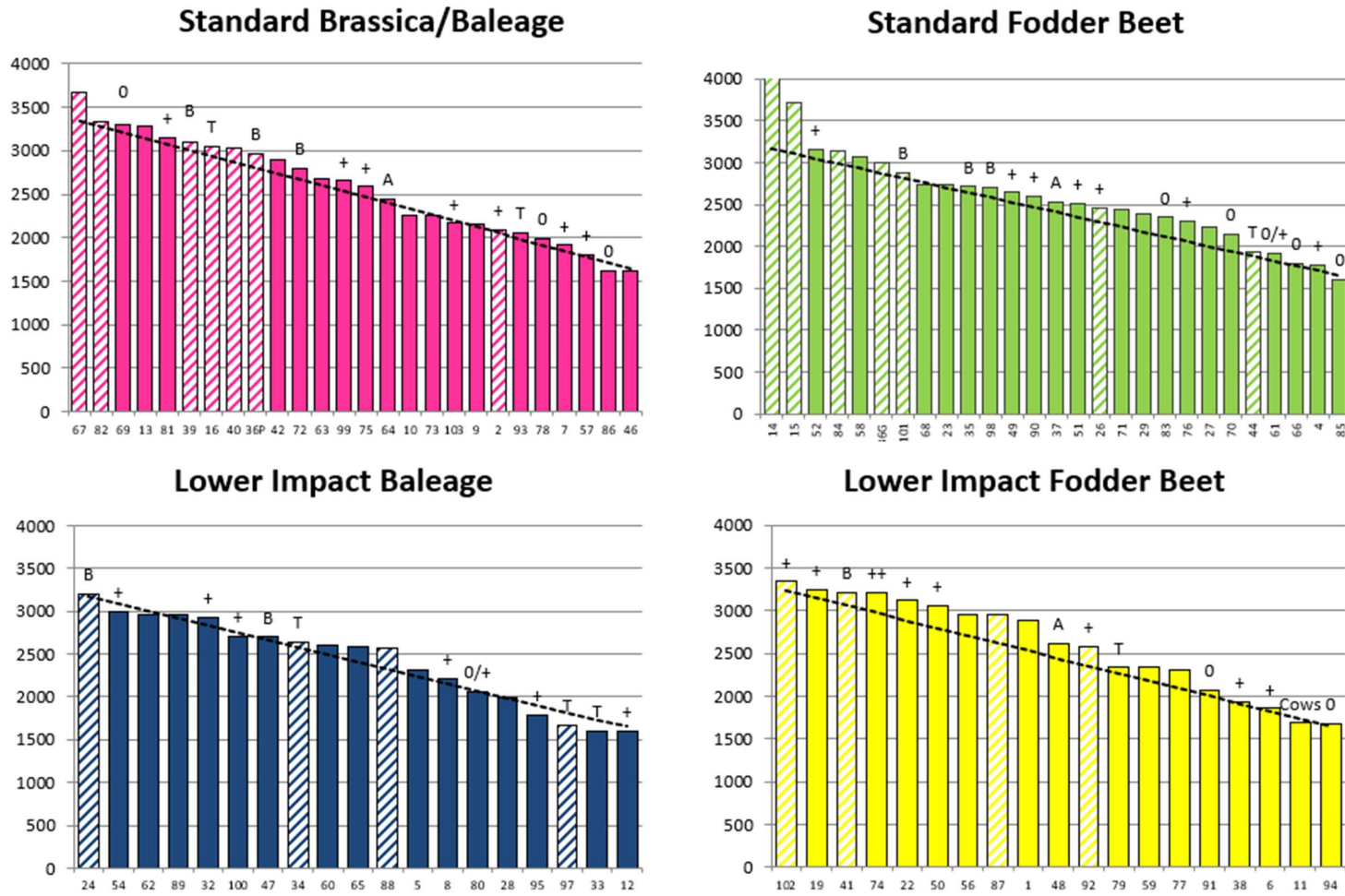


Figure 2: Feed Wedges as of 26th April 2023

Feed

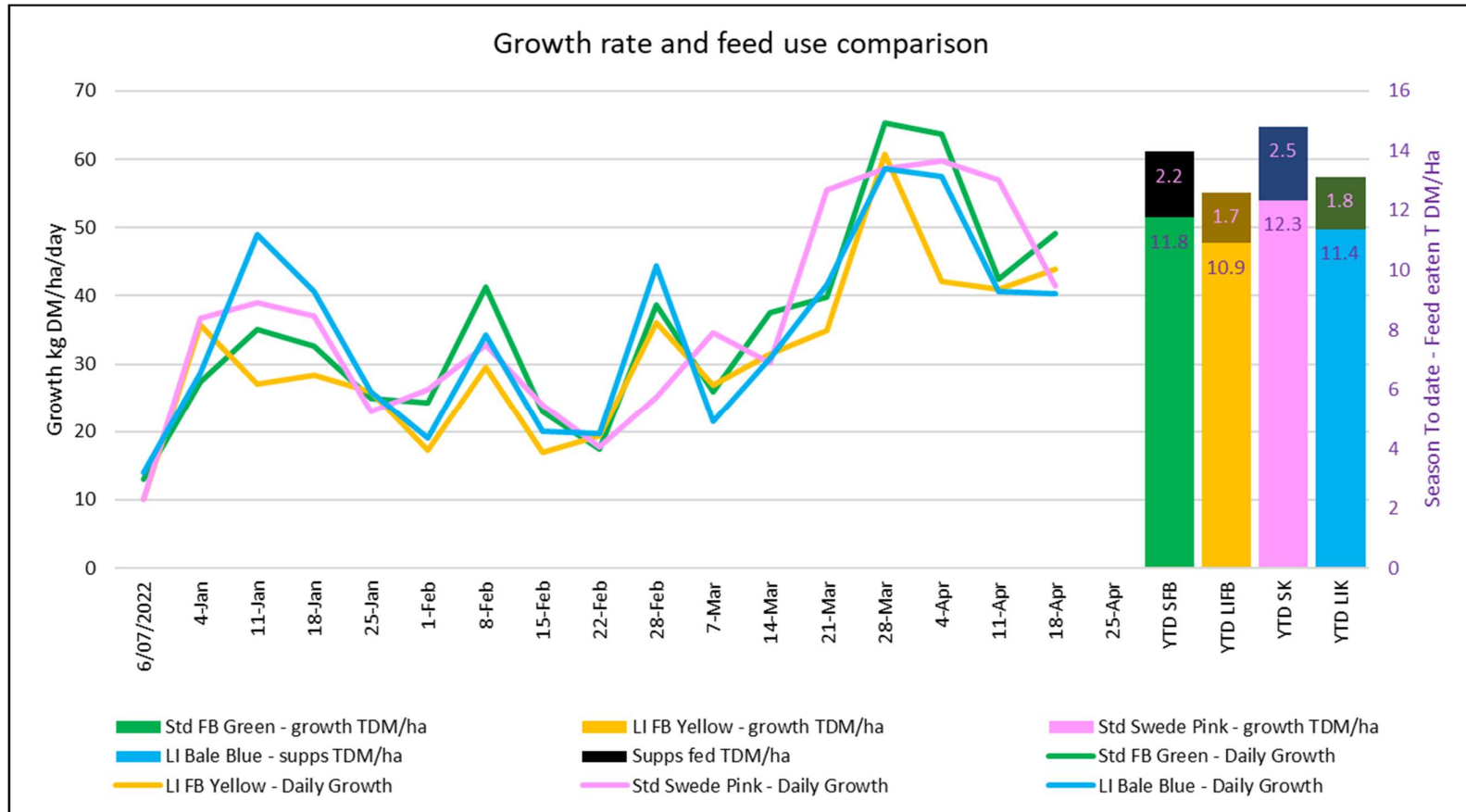


Figure 3: Weekly pasture growth rate at 25th April 2023 and year to date total feed eaten

Favourite photos for the week



Despite ample lush pasture these cows were still keen on silage treats 😊

Favourite photos for the week



Spring new grass paddock with strong plantain establishment