

Weekly Farm Summary 22 March 2023

Farm-system impacts of: Bales/Brassica vs Beet for winter AND Reducing N loss to water by 30%.

	Std Swede Pink	LI Bale Blue	Std FB Green	LI FB Yellow
Farmlet area including wintering	82.7	60.9	82.7	60.9
Peak cow numbers	222	137	221	135
Milking Area	73.8	55.1	73.8	55.1
Current Herd size (cows)	200	125	200	124
Pasture Stocking rate (current)	2.7	2.3	2.7	2.3
Winter Feed Milking supplement	Swede/Bale	Baleage	Beet 80 days	Beet 60 days
	In-shed feed 500kg/cow + silage as required			
Average Cover	2189	2284	2281	2330
Average Growth	30	31	38	31
Target rotation length	39	37	39	38
Last week act rotation (d)	23	30	25	32
Last week supp (kg DM/cow)	6.1	3.7	4.4	2.8
Average BCS	4.5	4.5	4.4	4.5
% of herd on priority feeding	15%	10%	18%	13%
Milk yield (L/cow)	17.3	19.8	16.9	17.3
Milk yield (kgMS/cow)	1.58	1.88	1.63	1.81
Nitrogen Cap kgN/ha/yr	180	50	180	50
% Nitrogen used (kgN/ha) YTD	58% (104kg)	72% (36kg)	58% (104kg)	74% (37kg)
Effluent N YTD	19	16	16	10
YTD supp (kg DM/cow)	882	534	779	546
YTD MS/cow	388	412	382	407
YTD MS/milk ha (YTD MS/farm ha)	1168 (1043)	1024 (927)	1143 (1020)	996 (902)
Business Area	Current Status			
Milk Production	Production in the standard herds dropped from last week, following the adjustment of rotation length resulting in a higher pasture intake than in previous weeks. Still some paddock variability showing through in the vat this week.			
Pasture & Feed	We're green again! Colour in the pasture has improved significantly with the rain and N in the system. Pasture intakes are back to 16.5kg/cow for all herds and growth is back above demand for all herds for the first time in months!			
Animals	Dry off consult with the vets this week to confirm dry off decision rules. Still waiting on milk pregnancy test results to enable the final cull lists to be established in the next week. Weighing and drenching calves at support block.			
Environment	Nitrogen applications continue to go on this week in line with the farmlet rules. All standard paddocks will get their 5th application before the cut-off date of 10th April and where grazing allows, some will get a 6th.			
Wintering	Crops continue to flourish with the moisture in the system. Finalising paddock plans based on predicted yields and with baleage on hand. Baleage will start to be placed out as each paddock wintering plan is confirmed.			
People	Farm is working through people and capability requirements for next season.			
Research	Urine collection from up to 50 cows to be completed as part of the Plantain Evaluation System trial over the next few weeks			

Milk Production

Principles of Milk Production management this week

Milk Production	Both standard herds have seen a reduction in milk production which is a bit surprising given the residuals that have been observed. Possibly a combination of no new grasses grazed this week and the supplementary feed and rotation length adjustment. LI farmlets with the same adjustment have either increased or held production.
Key Influences on Milk Production	Production continues to be a direct reflection of paddock quality variability. With the reduction of in-shed feed levels, some herds are taking longer to adjust to having more pasture in the diet than others and it is being reflected in the vat.
Cow Management	Continue to have a 3'n'2 milking frequency and preferentially feeding cows the following: less than BCS 4.0 - in-shed, at BCS 3.5 – in-shed and OAD milking and greater than BCS 5.5 no in-shed feeding. Following the next full herd BCS, milking frequency will be discussed to see if/when OAD milking needs to become an option for more cows.

	Std brassica/baleage Pink	LI Baleage Blue	Std Fodder beet Green	LI Fodder beet Yellow
kg Milksolids per cow this week / (last week)	1.60 (1.65)	1.90 (1.90)	1.64 (1.72)	1.82 (1.72)
kg Milksolids per ha this year / (same time last year)	1168 (1043)	1024 (927)	1143 (1020)	996 (902)
% Var kg Milksolids per ha Season per ha to date vs last season to date	8.2	8.2	13.4	11.9
No. of Cows needing preferential feeding (% herd)	31 (15)	13 (10)	36 (18)	17 (13)
Animal Health peculiarities	None this week	None this week	None this week	None this week

Milk Production

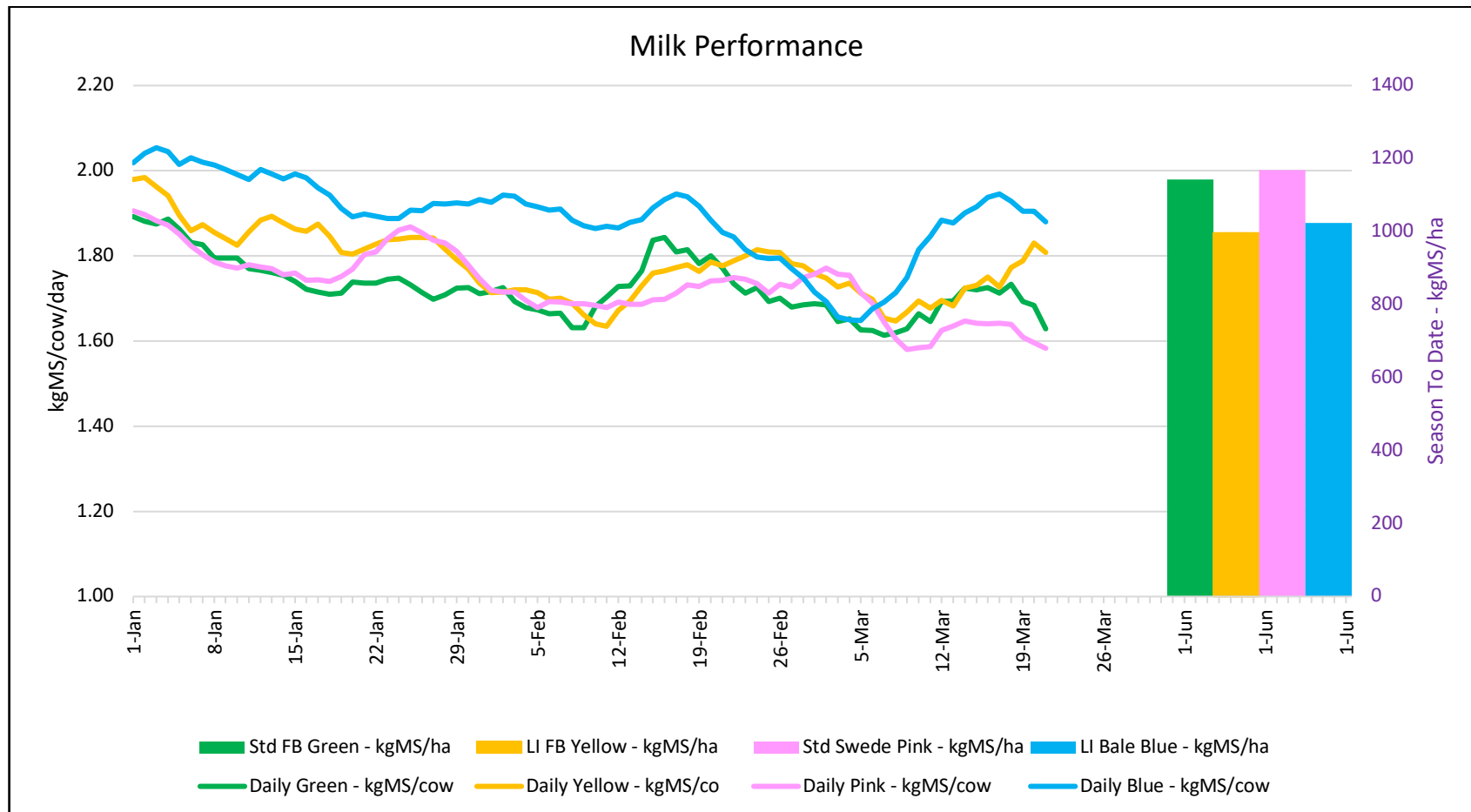


Figure 1: Milk solids production (/cow/day) plus cumulative season production (kg/ha) at 21st March 2023

Feed

Principles of Feed management this week

Feed Quality	Pasture dry matter content has reduced significantly across the farm in the last week with percentages in the late teens this week compared to high 20's for the previous few weeks. Feed is looking more even across the paddocks with fewer clumps and better growth between the clumps.
Growth Rate Management	No change in feeding strategies this week as growth is at or close to demand across the farmlets. APC sitting static and the grazing pattern is combining well with the 3 n 2 milk frequency that results in x2 19 hour grazings and x1 10 hour grazing every 48 hours.
Nitrogen Strategy	All remaining paddocks to receive N this round as weather and grazing windows allow.

	Std brassica/baleage Pink	LI Baleage Blue	Std Fodder beet Green	LI Fodder beet Yellow
Quantity	Increasing	Increasing	Increasing	Increasing
Quality	Variable quality and DM%	Variable quality and DM%	Variable quality and DM%	Variable quality and DM%
Surplus Management	None	None	None	None
Deficit Management for coming week- kgDM (diff from last week)	-1.6 (-3.6)	-1.1 (-2.3)	-0.9 (-2.8)	-0.6 (-2)
Target Rotation Length (days)	26	28	25	29

Feed

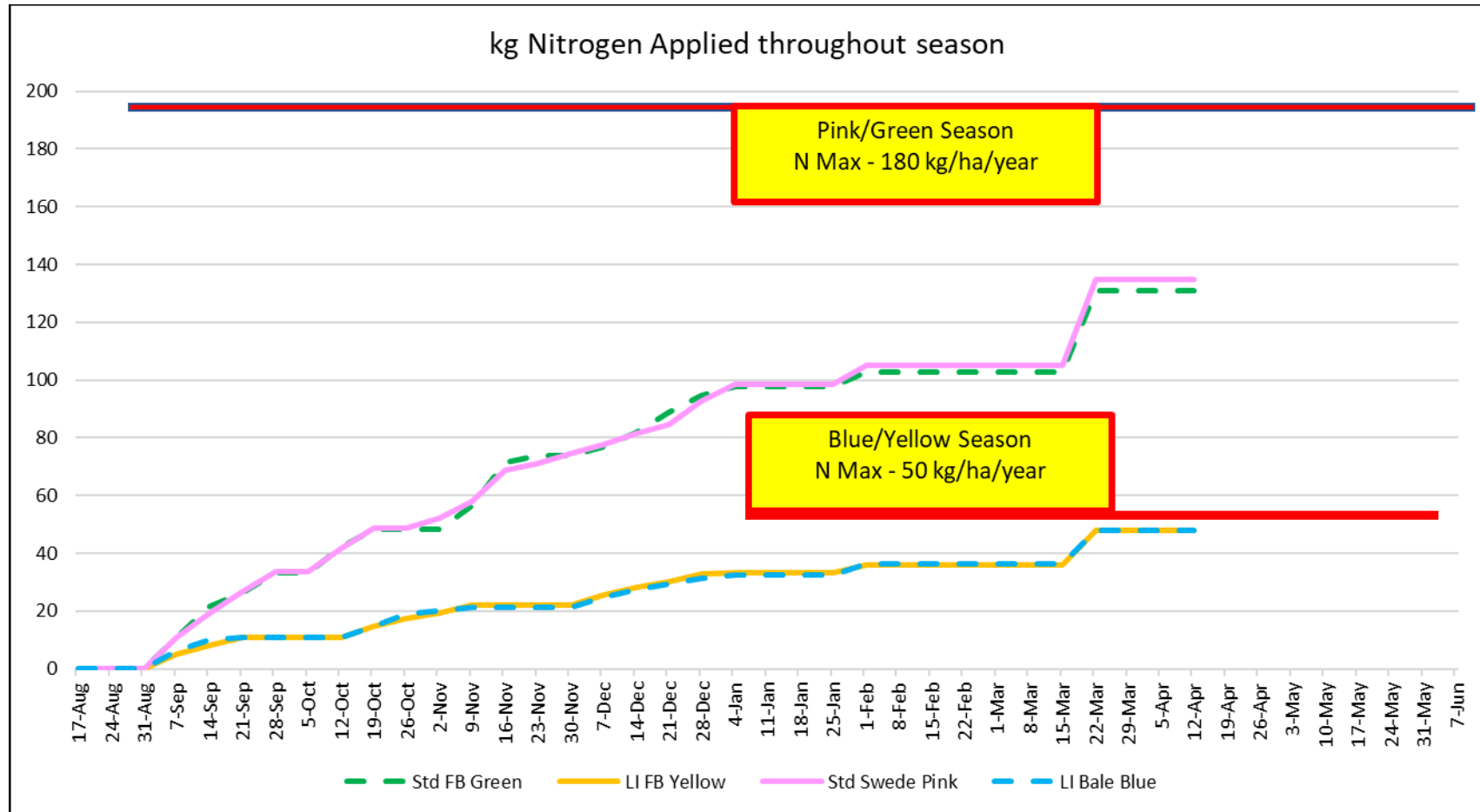
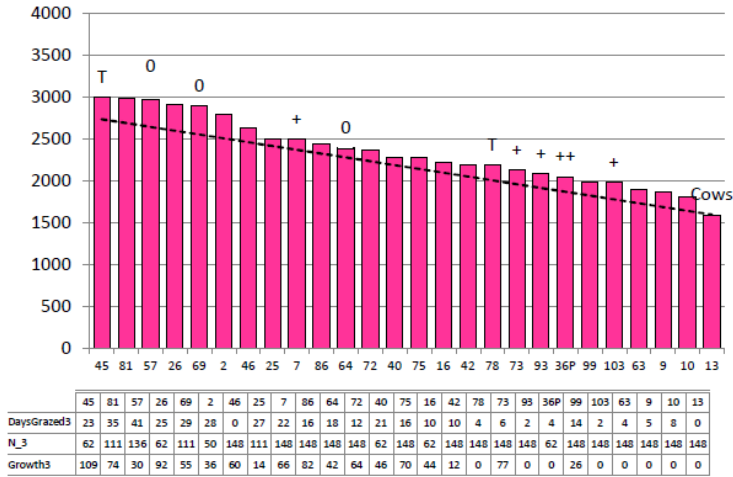


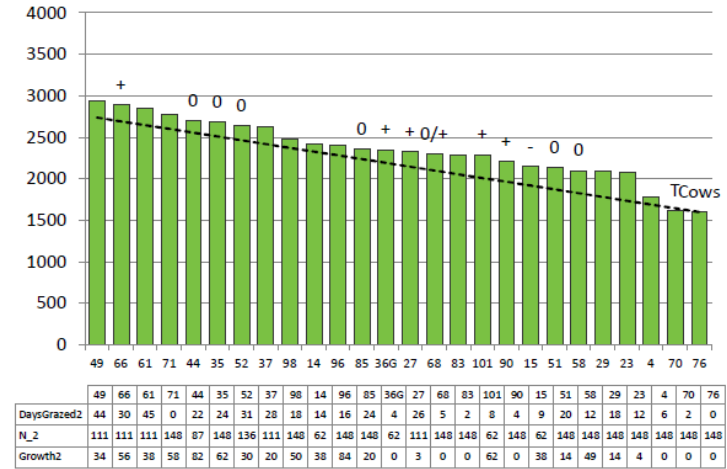
Figure 2: Nitrogen applications (season to date) for the Standard and LI farmlets

Feed

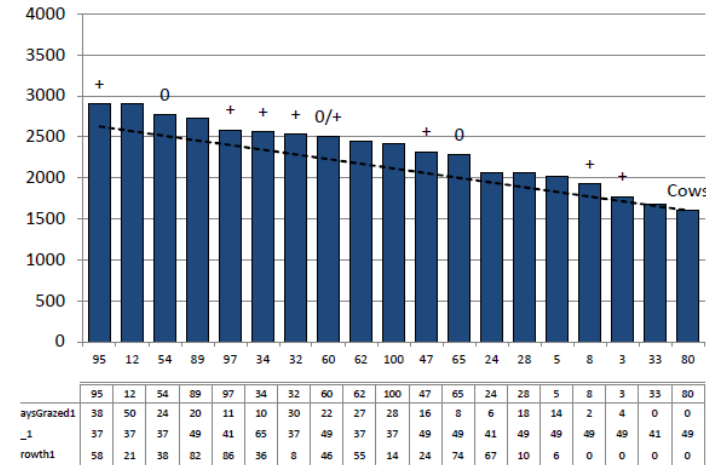
Standard Brassica/Baleage



Standard Fodder Beet



Lower Impact Baleage



Lower Impact Fodder Beet

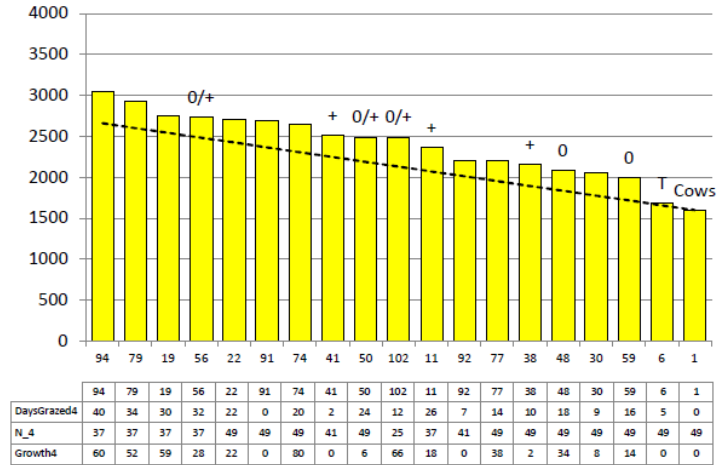


Figure 3: Feed Wedges as of 21st March 2023

Feed

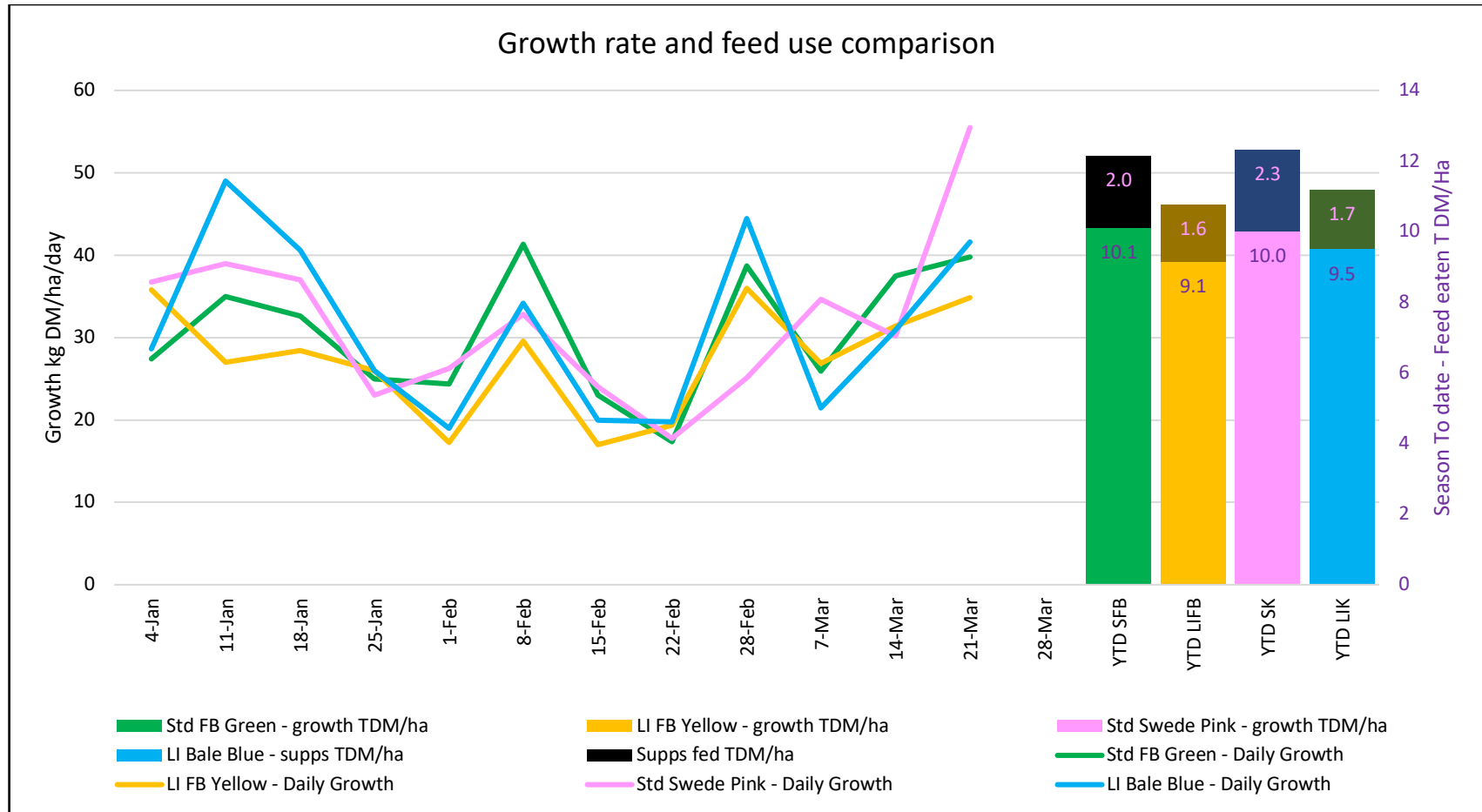


Figure 4: Weekly pasture growth rate at 21st March 2023 and year to date total feed eaten

Feed

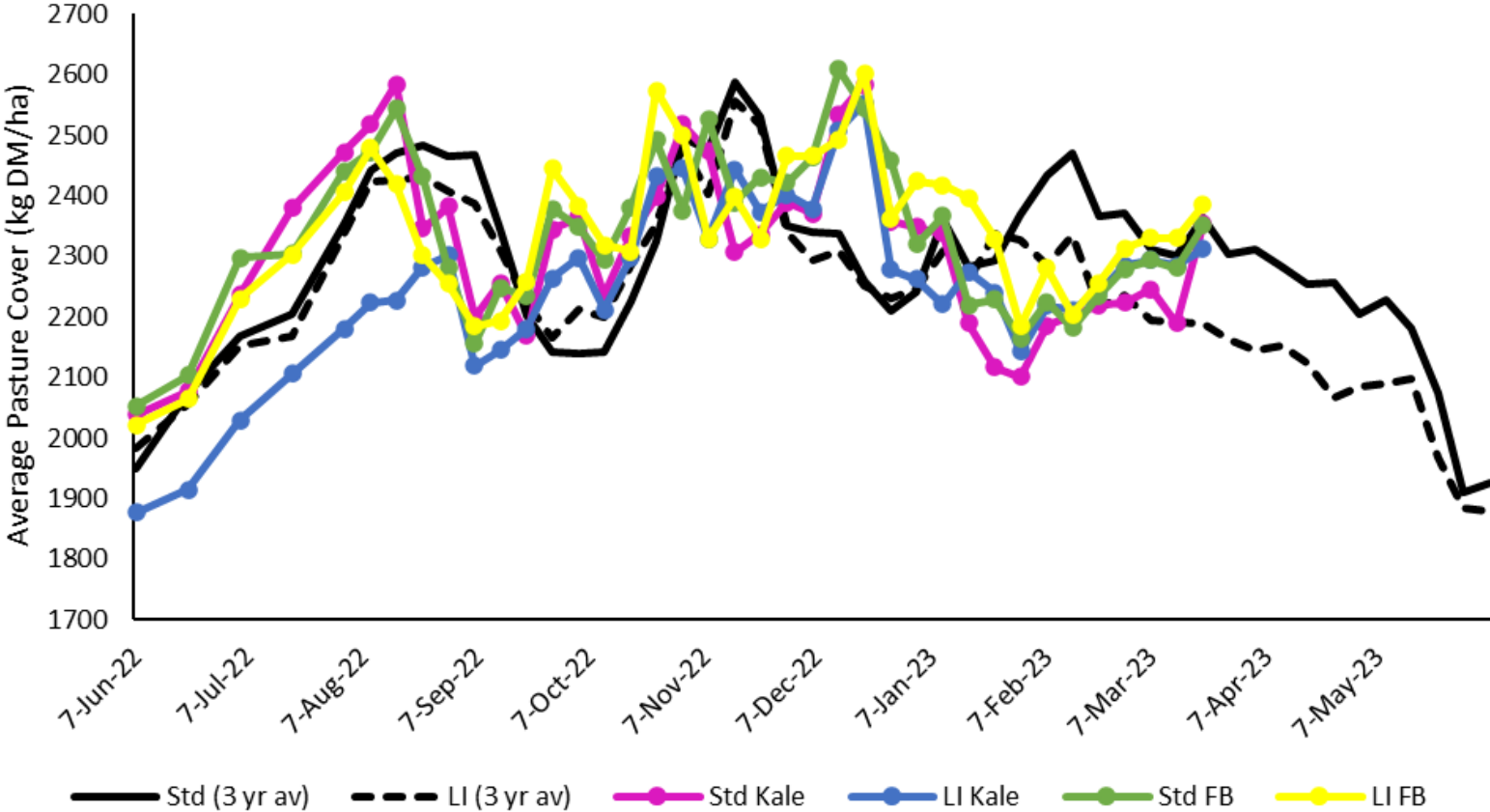


Figure 5: Average Pasture Cover this season compared to 3 yr average for Std and LI farmlets