

# Weekly Farm Summary 17 May 2023

Farm-system impacts of: Bales/Brassica vs Beet for winter AND Reducing N loss to water by 30%.

	Std Swede Pink	LI Bale Blue	Std FB Green	LI FB Yellow
Farmlet area including wintering	82.7	60.9	82.7	60.9
Peak cow numbers	222	137	221	135
Milking Area	74.0	55.1	76.9	55.1
Current Herd size (cows)	135	105	158	95
Pasture Stocking rate (current)	1.8	1.9	2.1	1.7
Winter Feed Milking supplement	Swede/Bale	Baleage	Beet 80 days	Beet 60 days
	In-shed feed 500kg/cow + silage as required			
Average Cover	2352	2322	2336	2587
Average Growth	32	38	29	35
Target rotation length	50	54	52	57
Last week act rotation (d)	35	36	46	29
Last week supp (kg DM/cow)	2.4	1.7	2.6	2.6
Average BCS	4.6	4.5	4.5	4.6
% of herd on priority feeding	4%	2%	8%	8%
% dried off	23%	18%	20%	11%
Milk yield (L/cow)	11.3	12.4	11.3	11.4
Milk yield (kgMS/cow)	1.31	1.43	1.30	1.29
<b>Nitrogen Cap kgN/ha/yr</b>	<b>180</b>	<b>50</b>	<b>180</b>	<b>50</b>
% Nitrogen used (kgN/ha) YTD	81% (145kg)	110% (55kg)	84% (151kg)	106% (53kg)
Effluent N YTD	17	22	23	20
Profit/ha vs Pink herd	\$0	-\$504	-\$526	-\$491
YTD supp (kg DM/cow)	864	749	776	747
YTD MS/cow	457	482	463	479
YTD MS/milk ha (YTD MS/farm ha)	1372 (1227)	1198 (1084)	1332 (1239)	1174 (1062)
<b>Business Area</b>	<b>Current Status</b>			
<b>Milk Production</b>	The herd is on track to produce over 335,000kgMS for the season. Production is stable this week with the average sitting between 1.3-1.4kgMS/cow/day. The slow decline is common for this time of the season with only one more week until dry off.			
<b>Pasture &amp; Feed</b>	Based on the APC across each farmlet, a range of tools will be used to get covers to 1950 by the end of next week. As we are setting up for the next farm system study, we need all systems at similar APC to remove bias when starting the new trial.			
<b>Animals</b>	We are seeing a few cases of mastitis as we head into the last week of lactation. Lameness occurrences have decreased with the shift to OAD milking. Last BCS of the season to be completed tomorrow. Cow count being completed tomorrow.			
<b>Environment</b>	Soil moisture and saturation levels are not yet limiting effluent application, however depending on the weather over the next few days this may change.			
<b>Wintering</b>	Paddock plans completed. Wintering mobs will be identified after tomorrows BCS. Fodder beet heifers have started transitioning onto fodder beet in the paddock. Fodder beet milkers and dries start transitioning tomorrow being fed lifted beet in their grass paddock. Checking water supply at support block to ensure we have enough capacity for 200 cows on a baleage diet.			
<b>People</b>	Progressing with a candidate for the vacant farm assistant position. The rest of the team have annual leave booked in for the latter parts of winter.			
<b>Research</b>	Final measurements of R3 statures are being taken this week. Plantain plot harvesting has now been completed.			

# Milk Production

## Principles of Milk Production management this week

Milk Production	Milk production stable this week, still sitting at 1.3-1.4kgMS/day.
Key Influences on Milk Production	Milk production is as expected for this time of the season. Feeding levels have been hitting targets with residuals being met, therefore contributing to the steady production. SCC sitting around 160000 across all herds.
Cow Management	BCS to be completed for the last time this season on the 18 <sup>th</sup> . The information from this will be used to determine wintering mobs. Just over 1 week left before full herd dry off. This will be conducted over 2 days.

	Std brassica/baleage Pink	LI Baleage Blue	Std Fodder beet Green	LI Fodder beet Yellow
kg Milksolids per cow this week / (last week)	1.31 (1.35)	1.43 (1.35)	1.30 (1.31)	1.29 (1.33)
kg Milksolids per ha this year / (same time last year)	1372 (1227)	1198 (1084)	1332 (1239)	1174 (1062)
% Var kg Milksolids per ha Season per ha to date vs last season to date	8.5%	9.8%	13.3%	13.4%
No. of Cows needing preferential feeding	27	15	34	14
Animal Health peculiarities	None	None	None	None

# Milk Production

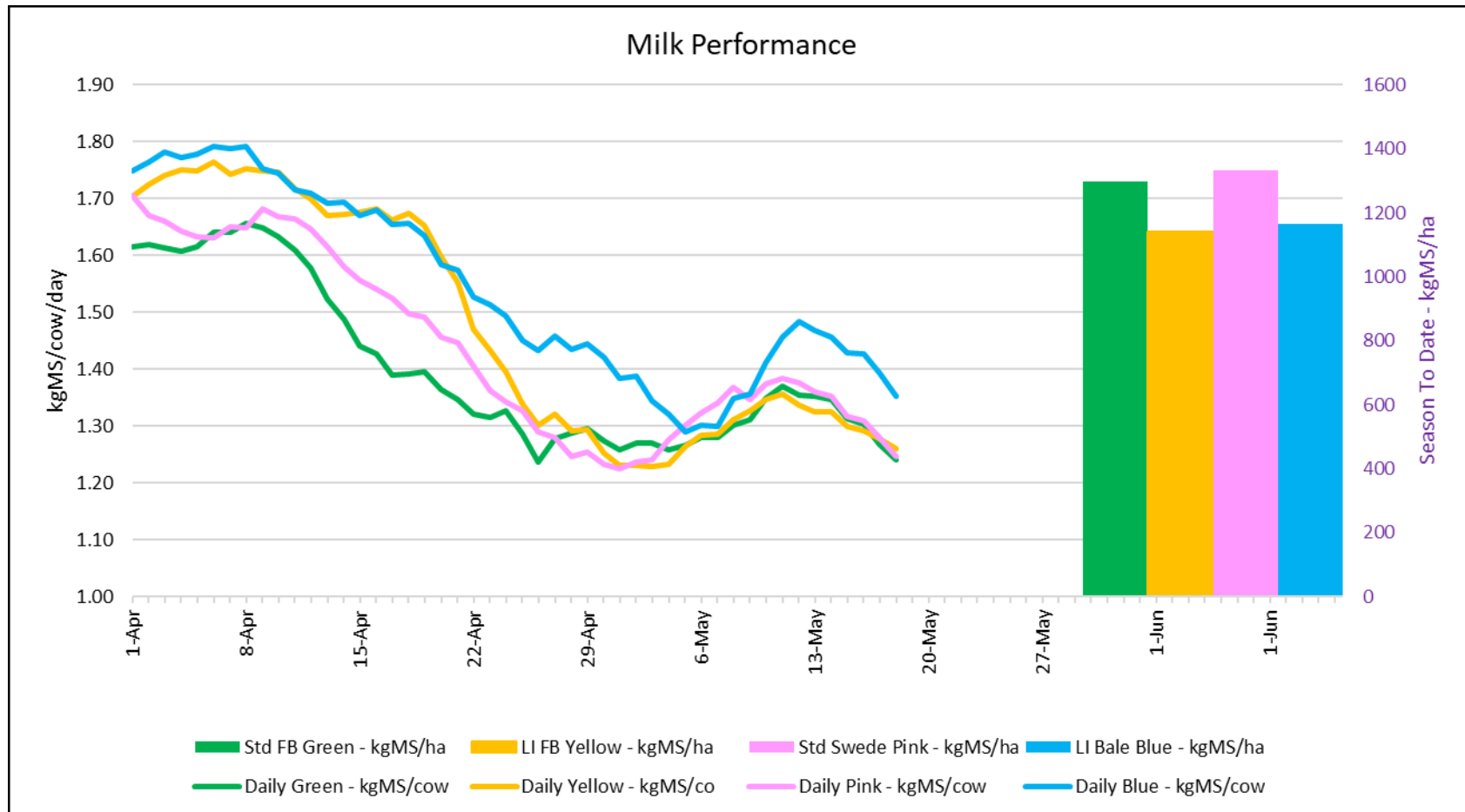


Figure 1: Milk solids production (cow/day) plus cumulative season production (kg/ha) at 9<sup>th</sup> May 2023

# Feed

## Principles of Feed management this week

Feed Quality	Pastures are soft this week with samples showing low DM, typical of autumn pastures.
Growth Rate Management	Residuals being managed well and hitting targets which will help reset the farmlets heading into winter. APC sitting at 2350 on average, however the yellow herds covers are significantly higher than the others. Growth rates are sitting above predictions used for the Autumn feed budget.
Nitrogen Strategy	Last application for the 2023/2024 season was the beginning of April 2023

	Std brassica/baleage Pink	LI Baleage Blue	Std Fodder beet Green	LI Fodder beet Yellow
Quantity	APC decreasing	APC decreasing	APC decreasing	APC holding
Quality	Maintaining	Maintaining	Maintaining	Maintaining
Surplus Management	Excess stock into rotation	Excess stock into rotation	Excess stock into rotation	Excess stock into rotation
Supplement for coming week- kgDM (diff from last week)	0.8 (-1.6)	1.5 (-0.2)	4.5 (2)	5.8 (3.2)
Target Rotation Length (days)	50	54	52	57

# Feed

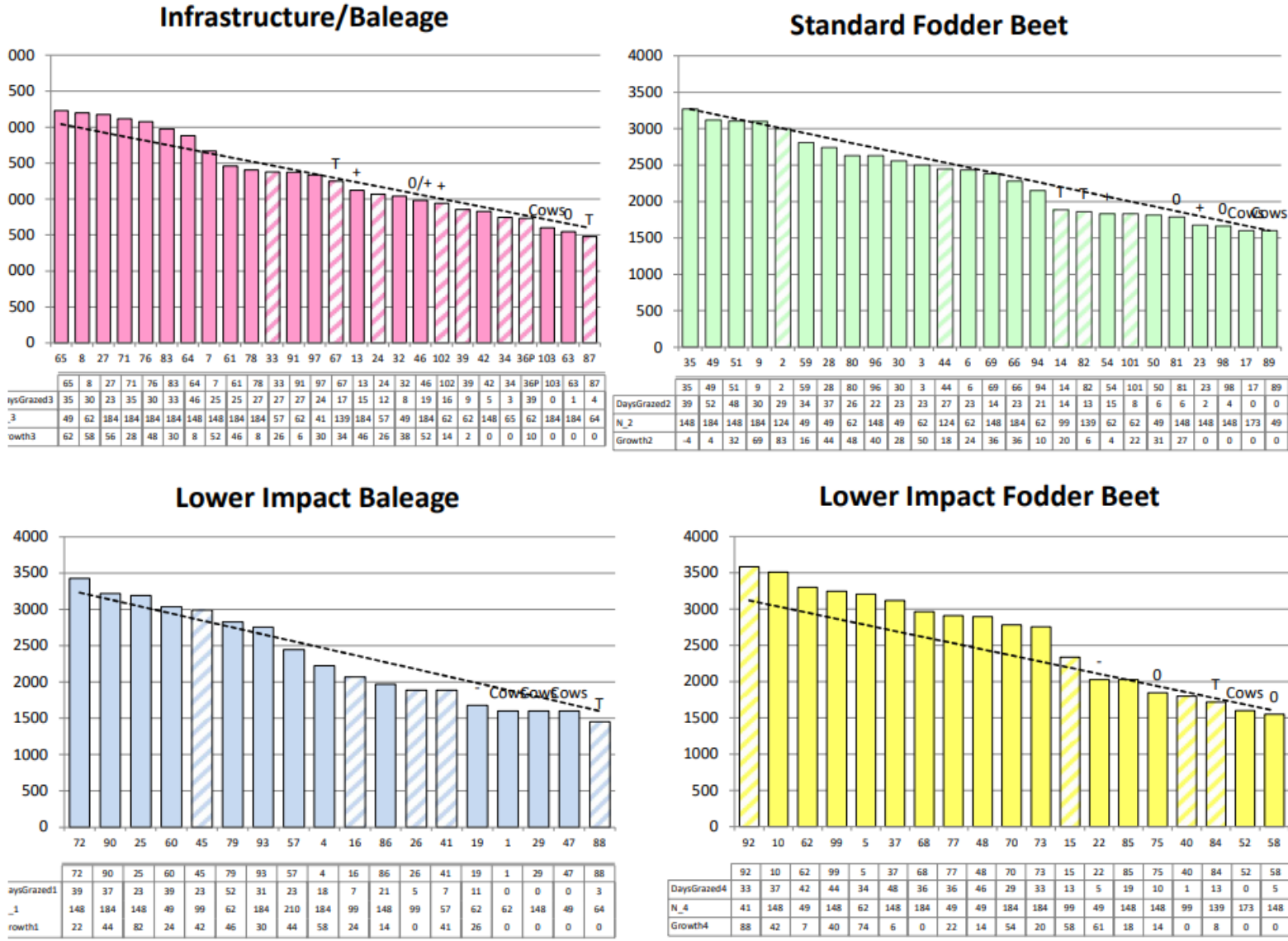


Figure 2: New Farmler Feed Wedges as of 16 May 2023

# Feed

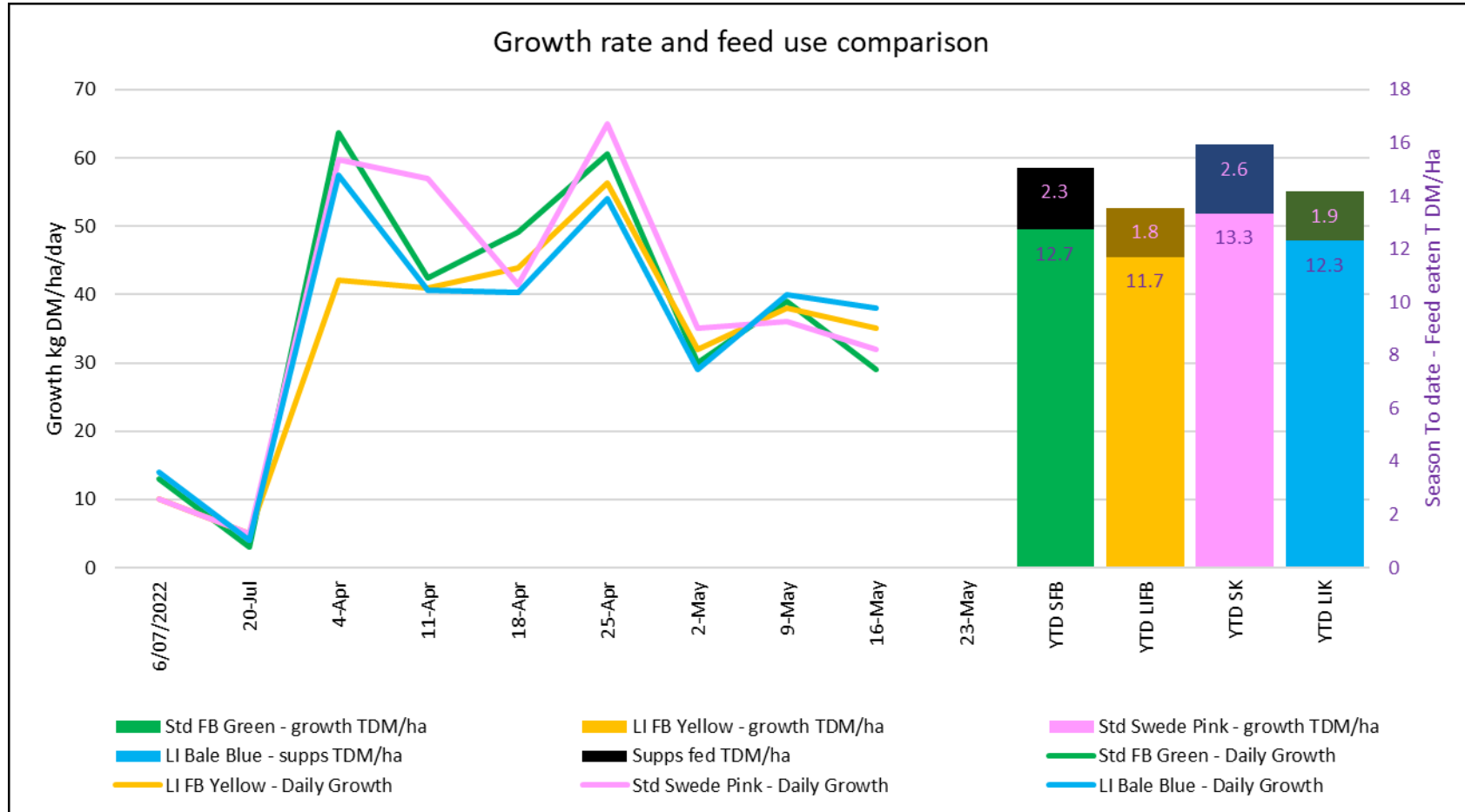


Figure 4: Weekly pasture growth rate at 16 May 2023 and year to date total feed eaten



# The week in pictures



Nosey heifers intrigued with this weeks farm walk.



Break sizes have been measured out and identified with the flags.



Heifers being transitioned onto fodder beet this week.