

# Weekly Farm Summary 13 January 2023

Farm-system impacts of: Kale vs Fodder beet for winter AND Reducing N loss to water by 30%.

	Std Swede Pink	LI Bale Blue	Std FB Green	LI FB Yellow
Farmlet area including wintering	82.7	60.9	82.7	60.9
Peak cow numbers	222	137	221	135
Milking Area	73.8	55.1	73.8	55.1
Current Herd size (cows)	222	133	215	134
Pasture Stocking rate (current)	3.0	2.4	2.9	2.4
Winter Feed Milking supplement	Swede/Bale	Baleage	Beet 80 days	Beet 60 days
	In-shed feed 500kg/cow + silage as required			
Average Cover	2338	2221	2367	2417
Average Growth	39	27	35	49
Target rotation length	23	25	23	28
Last week act rotation (d)	25	20	24	30
Last week supp (kg DM/cow)	2.4	3.5	2.0	2.2
Average BCS	4.4	4.5	4.4	4.5
% of herd on priority feeding	7%	5%	5%	2%
Milk yield (L/cow)	19.7	22.2	19.5	20.5
Milk yield (kgMS/cow)	1.77	1.99	1.78	1.82
<b>Nitrogen Cap kgN/ha/yr</b>	<b>180</b>	<b>50</b>	<b>180</b>	<b>50</b>
% Nitrogen used (kgN/ha) YTD	49% (89kg)	60% (30kg)	47% (85kg)	58% (29kg)
Effluent N YTD	11	10	10	9
Profit/ha comp to Control	\$0	\$0	\$0	\$0
YTD supp (kg DM/cow)	467	315	410	332
YTD MS/cow	276	293	273	289
YTD MS/milk ha (YTD MS/farm ha)	830 (741)	729 (659)	817 (729)	709 (642)

Business Area	Current Status
<b>Milk Production</b>	Production continues to be affected by pasture quality and the pasture energy being reduced due to periods of heat. Milk urea increasing suggesting that protein isn't limiting milk production. Herd test being completed this week.
<b>Pasture &amp; Feed</b>	Growth rates continue to be limited with the lack of moisture; however, they have increased this week after 15 ml rain last week. Rotation length to be extended with supplement use to preserve feed heading into autumn. Calibration cuts indicating a lot of dry matter in the base of the pastures and although pasture still green, quality is likely to be declining. Latest DM% was 24.
<b>Animals</b>	Early scan for heifers completed 12 <sup>th</sup> January. Mating finishes 12 <sup>th</sup> January with 6-week scan booked for 25 <sup>th</sup> January. BCS holding between 4.4 and 4.5 for all herds but range increasing with 16-25% at BCS 5 or above
<b>Environment</b>	Effluent applications evenly spread over all farmlets, with conscious effort being made to ensure no farmlet is prioritised over another. Several paddocks at their annual application so will not receive effluent for the rest of the season.
<b>Wintering</b>	Transition zones in FB paddocks to be drilled with grass when weather conditions allow.
<b>People</b>	Team enjoying later morning milking start times and a number taking annual leave.
<b>Research</b>	Heat load Index trial starting January 25 <sup>th</sup> . Observations of panting, drooling and respiration rates will be compared with data from collars and Smaxtec boli.

# Milk Production

## Principles of Milk Production management this week

Milk Production	Production has been challenged with the variation of feed quality and quantity across all herds. Pasture ME has likely reduced with the recent heat, therefore energy has potentially been limited for the cows.
Key Influences on Milk Production	LI Baleage herd have been grazing pastures with the lowest pre-graze mass so likely eating better quality pasture plus have had additional inshed supplementation for the last 3 weeks therefore holding production higher than the other herds.
Cow Management	TAD milking continues as we head into a dry period. Team enjoying the later start time of 6.30am. BCS across all herds remains steady, however a larger spread within each herd looks to be more apparent.

	Std brassica/baleage Pink	LI Baleage Blue	Std Fodder beet Green	LI Fodder beet Yellow
kg Milksolids per cow this week / (last week)	1.77 (1.9)	1.99 (2.01)	1.78 (1.94)	1.82 (1.94)
kg Milksolids per ha this year / (same time last year)	830 (753)	729 (672)	817 (709)	631 (709)
% Var kg Milksolids per ha Season per ha to date vs last season to date	10.2	8.5	15.2	12.4
No. of Cows needing preferential feeding (% herd)	15 (7)	7 (5)	11 (5)	3 (2)
Animal Health peculiarities	<b>None</b>	<b>None</b>	<b>None</b>	<b>None</b>

# Milk Production

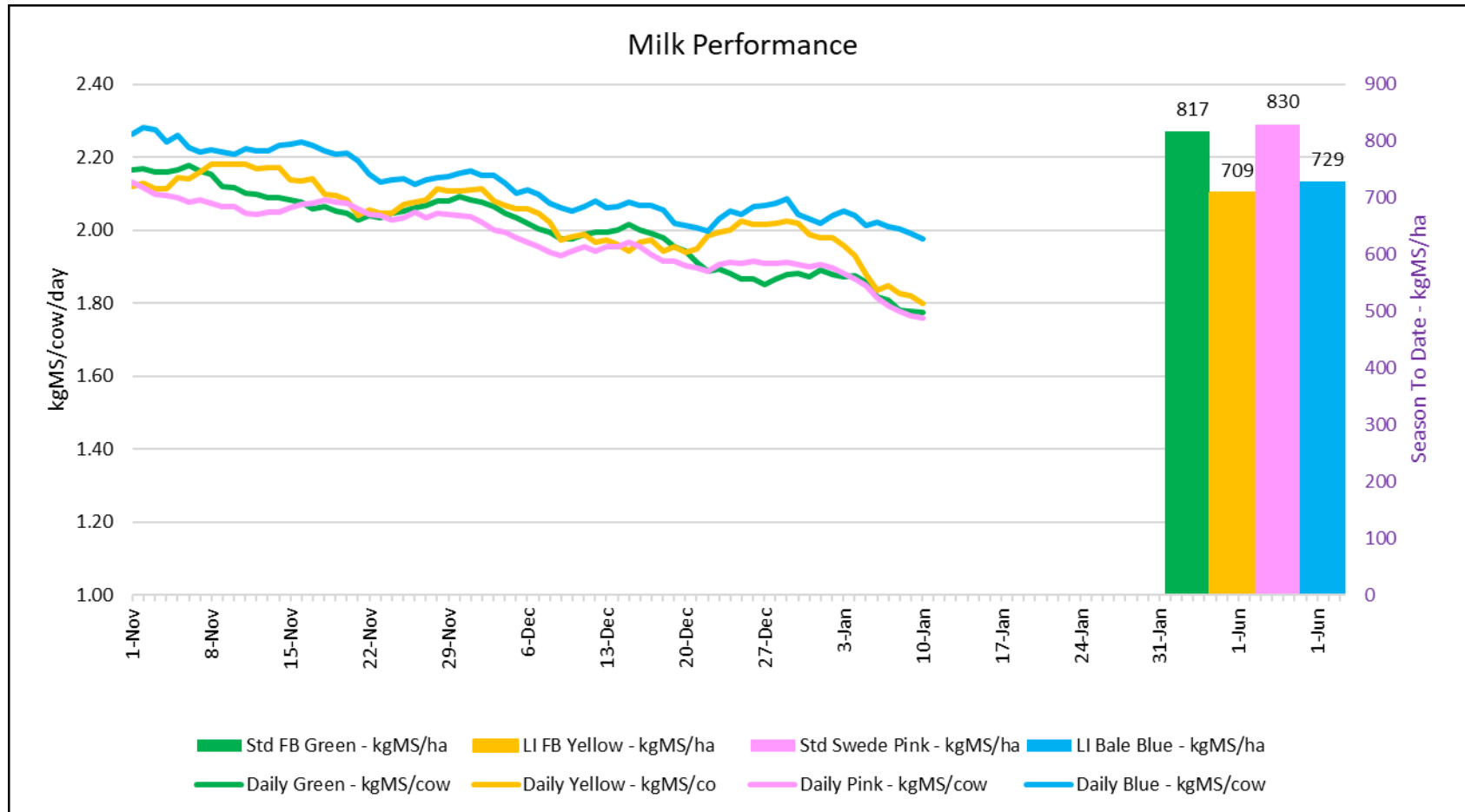


Figure 1: Milk solids production (/cow/day) plus cumulative season production (kg/ha)

# Body condition score

As at 10<sup>th</sup> January 2023 – updated fortnightly

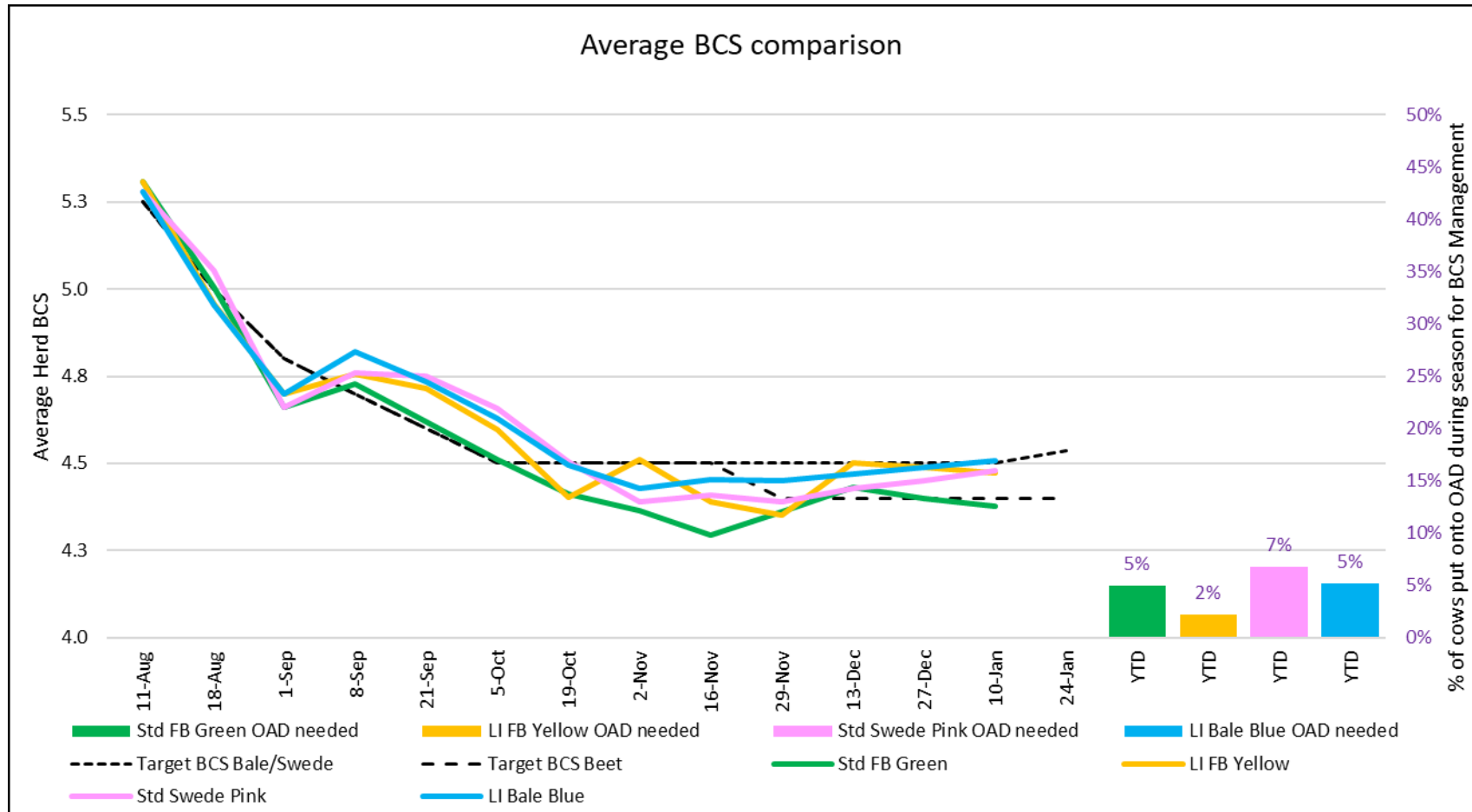


Figure 2: Fortnightly BCS trends and percentage of the herd requiring OAD milking season to date

# Body condition score

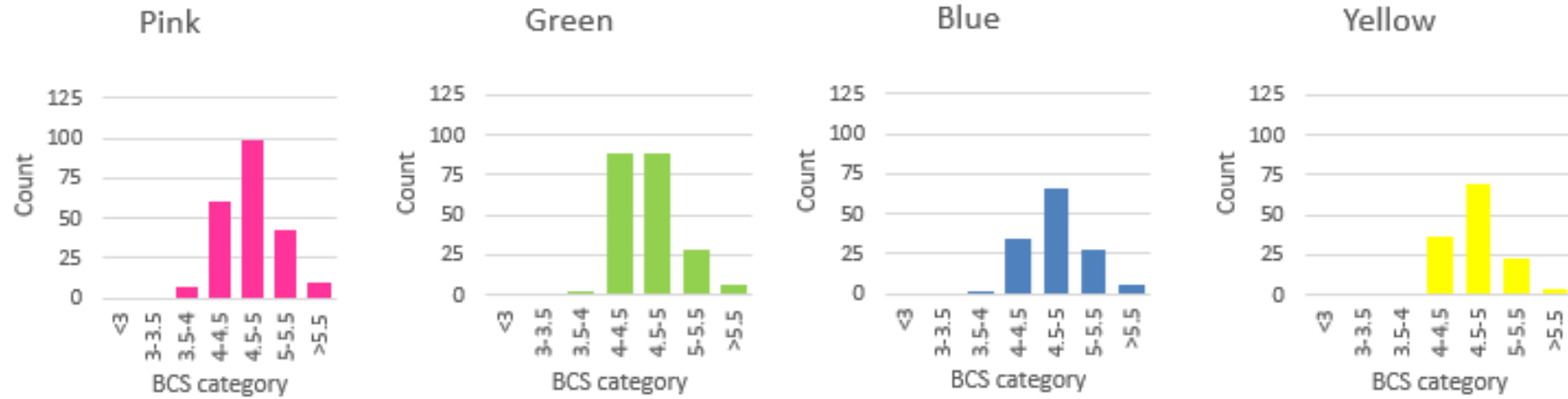


Figure 3: Herd BCS range assessed 10<sup>th</sup> January 2023

# Feed

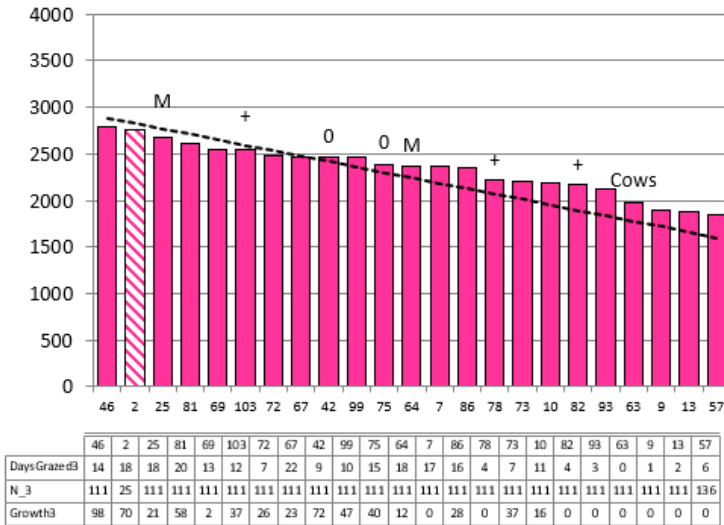
## Principles of Feed management this week

<b>Feed Quality</b>	The last dry matter test came back at 24% so the pastures are drying out. No samples were taken for quality analysis over the Christmas break but milk urea results suggest protein is not limiting production. Now well past peak heading so much less seedhead across the farm and topping has stopped.
<b>Growth Rate Management</b>	Due to the short to medium term weather forecast looking dry, round length will be extended to 32-34 days. This will be done with a combination of 2.5 kg in-shed feed and the remainder of conserved pasture, finishing the spring silage stack first then feeding farmler baleage. No more paddocks to be topped and we have delayed the spraying out of the grass:grass paddocks until the extended rotation has stabilized
<b>Nitrogen Strategy</b>	Nitrogen applications have been paused until 15-20mls of rain is reliably forecast. Pre-grazing applications may be considered (if grazing times allow) for those paddocks that have missed an application. Effluent applications continue to be applied, with all new grass paddocks in the effluent block due to receive effluent as the early dry means they will miss their post first grazing N fertilizer applications.

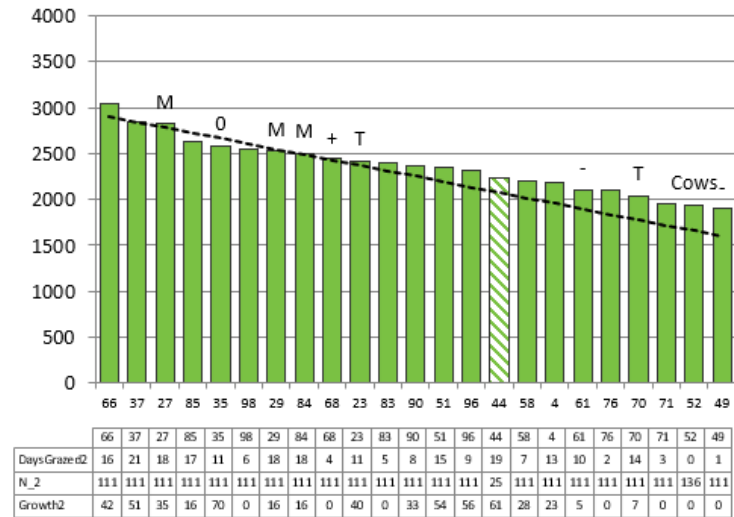
	<b>Std brassica/baleage Pink</b>	<b>LI Baleage Blue</b>	<b>Std Fodder beet Green</b>	<b>LI Fodder beet Yellow</b>
<b>Quantity</b>	Deficit	Deficit	Deficit	Deficit
<b>Quality</b>	Still green in colour but very dry in base; increasing dry matter	Still green in colour but very dry in base; increasing dry matter	Still green in colour but very dry in base; increasing dry matter	Still green in colour but very dry in base; increasing dry matter
<b>Surplus Management</b>	None	None	None	None
<b>Deficit Management for coming week- kgDM (diff from last week)</b>	6.6 (+4.2)	5.8 (+2.3)	6.4 (+4.4)	4.5 (+2.4)
<b>Target Rotation Length (days)</b>	35	33	35	36

# Feed

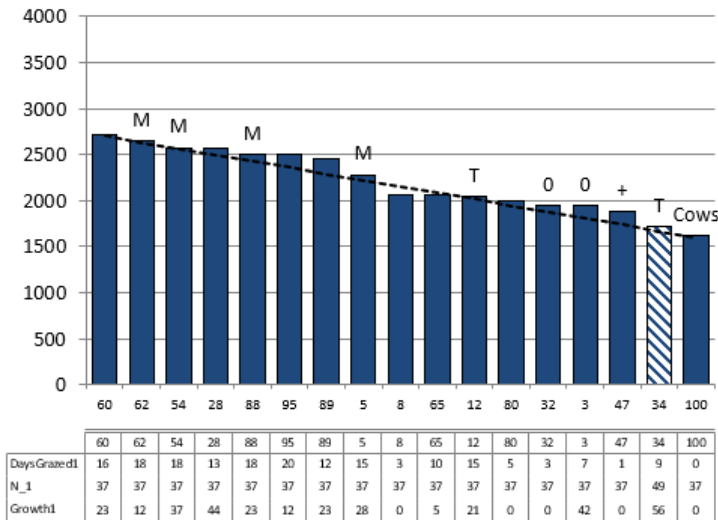
## Standard Brassica/Baleage



## Standard Fodder Beet



## Lower Impact Baleage



## Lower Impact Fodder Beet

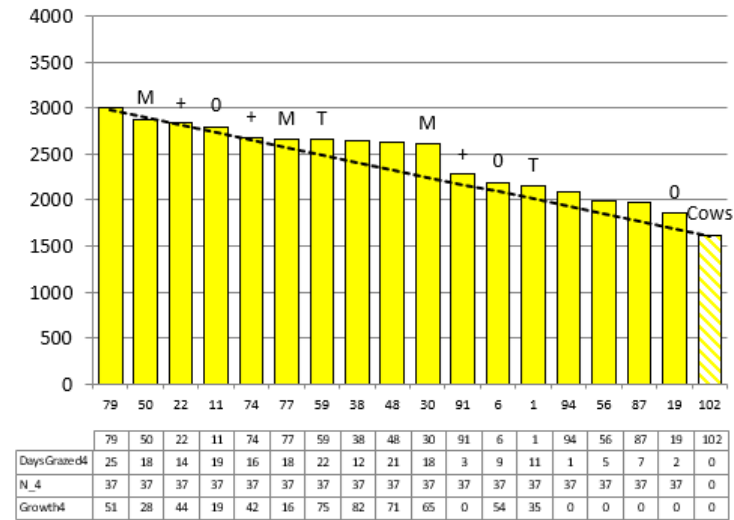


Figure 4: Feed Wedges as of 10<sup>th</sup> January 2023

# Feed

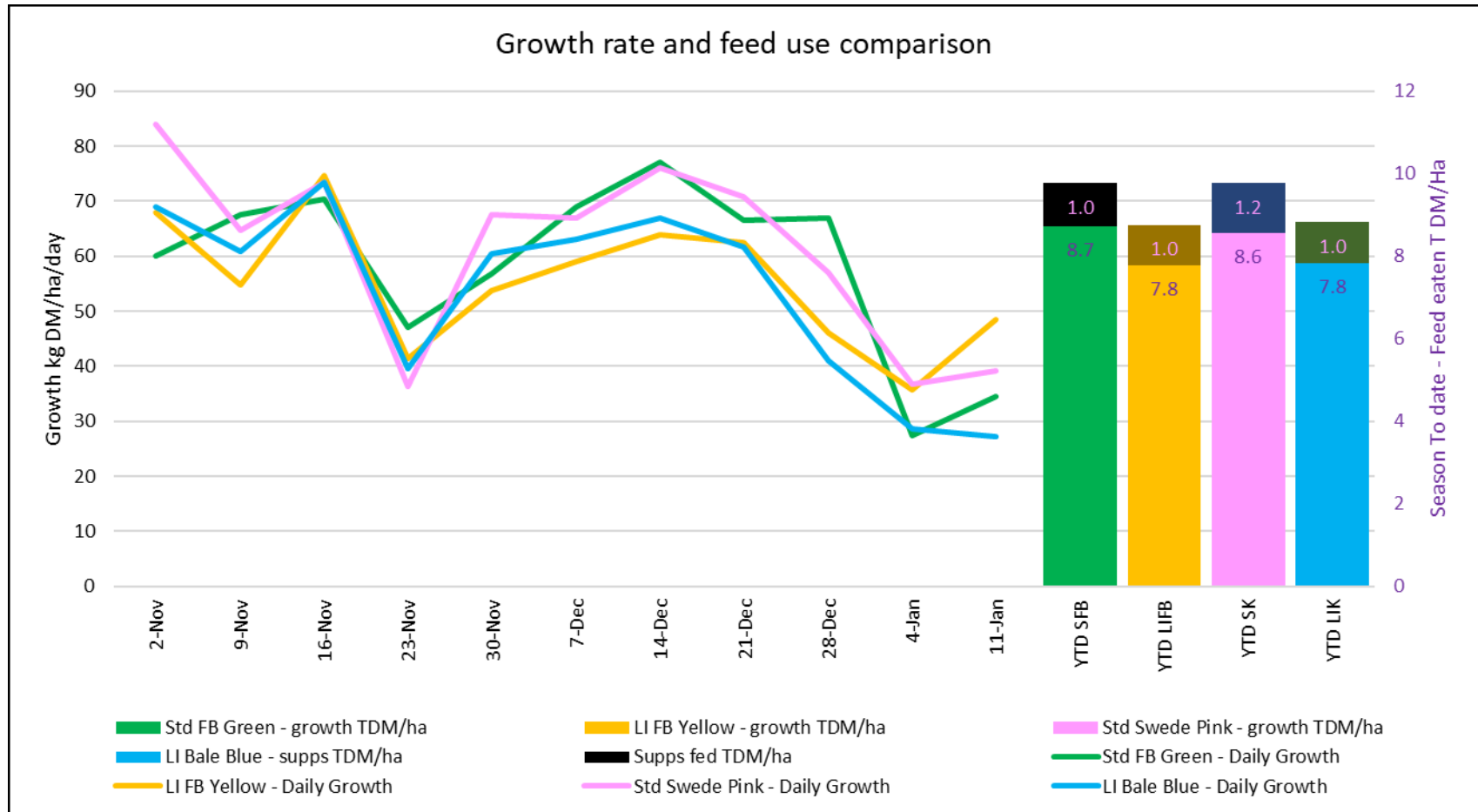


Figure 5: Weekly growth rate (kgDM/ha/d) & YTD feed use