

Weekly Farm Summary 10 May 2023

Farm-system impacts of: Bales/Brassica vs Beet for winter AND Reducing N loss to water by 30%.

	Std Swede Pink	LI Bale Blue	Std FB Green	LI FB Yellow
Farmlet area including wintering	82.7	60.9	82.7	60.9
Peak cow numbers	222	137	221	135
Milking Area	74.0	55.1	76.9	55.1
Current Herd size (cows)	130	105	158	95
Pasture Stocking rate (current)	1.8	1.9	2.1	1.7
Winter Feed Milking supplement	Swede/Bale	Baleage	Beet 80 days	Beet 60 days
	In-shed feed 500kg/cow + silage as required			
Average Cover	2364	2563	2441	2622
Average Growth	36	40	39	38
Target rotation length	50	54	52	57
Last week act rotation (d)	45	33	50	32
Last week supp (kg DM/cow)	3.2	3.4	1.9	3.5
Average BCS	#N/A	#N/A	#N/A	#N/A
% of herd on priority feeding	4%	2%	8%	8%
% dried off	23%	18%	20%	11%
Milk yield (L/cow)	12.6	13.0	12.4	12.4
Milk yield (kgMS/cow)	1.35	1.35	1.31	1.33
Nitrogen Cap kgN/ha/yr	180	50	180	50
% Nitrogen used (kgN/ha) YTD	81% (145kg)	110% (55kg)	84% (151kg)	106% (53kg)
Effluent N YTD	17	22	23	20
Profit/ha vs Pink herd	\$0	-\$504	-\$526	-\$491
YTD supp (kg DM/cow)	853	737	758	731
YTD MS/cow	444	469	451	465
YTD MS/milk ha (YTD MS/farm ha)	1334 (1194)	1167 (1056)	1298 (1207)	1140 (1032)
Business Area	Current Status			
Milk Production	Milk production on a per cow basis continues to hold as feed quality remains high. Production for the season to date is 14% ahead of last season. Current cows in milk will be milked through until the 25/26 th May.			
Pasture & Feed	Growth rates continue to remain in the high 30's this week with soil temperatures and moisture levels favourable for growth. Supplement use has been revised to increase pasture demand to ensure we hit APC dry off targets.			
Animals	Dry cows have been consolidated into one mob and will start grazing the high pre-graze paddocks across all the herds to pull APC down. BCS score is slowly evening out with a lift in the low BCS cows. Heifers have been collared and given their herd tags. They will be weighed and drenched later this week before heading back to the milking platform on Sunday in preparation for teat sealing on Monday.			
Environment	Effluent continues to be applied to Std paddocks with the aim of getting the pond down to 30% full by dry off			
Wintering	Winter paddocks are being set up with bales, bale feeders, portable water troughs and dividing fences. Transitioning for the FB herd will start next week with lifted beet replacing the in-shed feed for these two herds. Heifers for these herds and cows already dried off will also start transitioning to fodder beet next week.			
People	An offer for our calf rearing position has been made and should be finalised in the next week. Interviews are underway for the farm assistant position. Richard Kyte has joined us as the interim GM until the permanent role is filled.			
Research	Sam and Tash have been busy completing crop yields, final herd tests and BCS for the season. Plantain plot trial harvesting has also started.			

Milk Production

Principles of Milk Production management this week

Milk Production	Milk production on a per cow basis has lifted over the last week up to 1.3 to 1.4 kgMS/cow average across the herds. Litres have been variable through the week but are now holding at a level the team are happy with. We expect to see an impact in production with the weather front coming through over the weekend. SCC is sitting at 160,000.
Key Influences on Milk Production	Good quality pasture and inshed feed, combined with favourable weather conditions has led to the increase in per cow production. With the drying off of 60 cows this week, overall production has dropped but should remain constant now for the remainder of the milking season. A revision of the supplement use should have little/ no impact on production as pasture intake levels increase to bring APC down.
Cow Management	The number of cows still on preferential feeding is reducing as the bulk of the light cows have been dried off to ensure BCS targets are being met heading into winter. Dry off has been booked in for the 25 th and 26 th of May so just over 2 weeks of the milking season left.

	Std brassica/baleage Pink	LI Baleage Blue	Std Fodder beet Green	LI Fodder beet Yellow
kg Milksolids per cow this week / (last week)	1.35 (1.25)	1.35 (1.4)	1.31 (1.31)	1.33 (1.25)
kg Milksolids per ha this year / (same time last year)	1334 (1194)	1167 (1056)	1298 (1207)	1140 (1032)
% Var kg Milksolids per ha Season per ha to date vs last season to date	8.4	9.9	13.4	13.4
No. of Cows needing preferential feeding (% herd)	5 (4)	2 (2)	12 (8)	8 (8)
Animal Health peculiarities	None	None	None	None

Milk Production

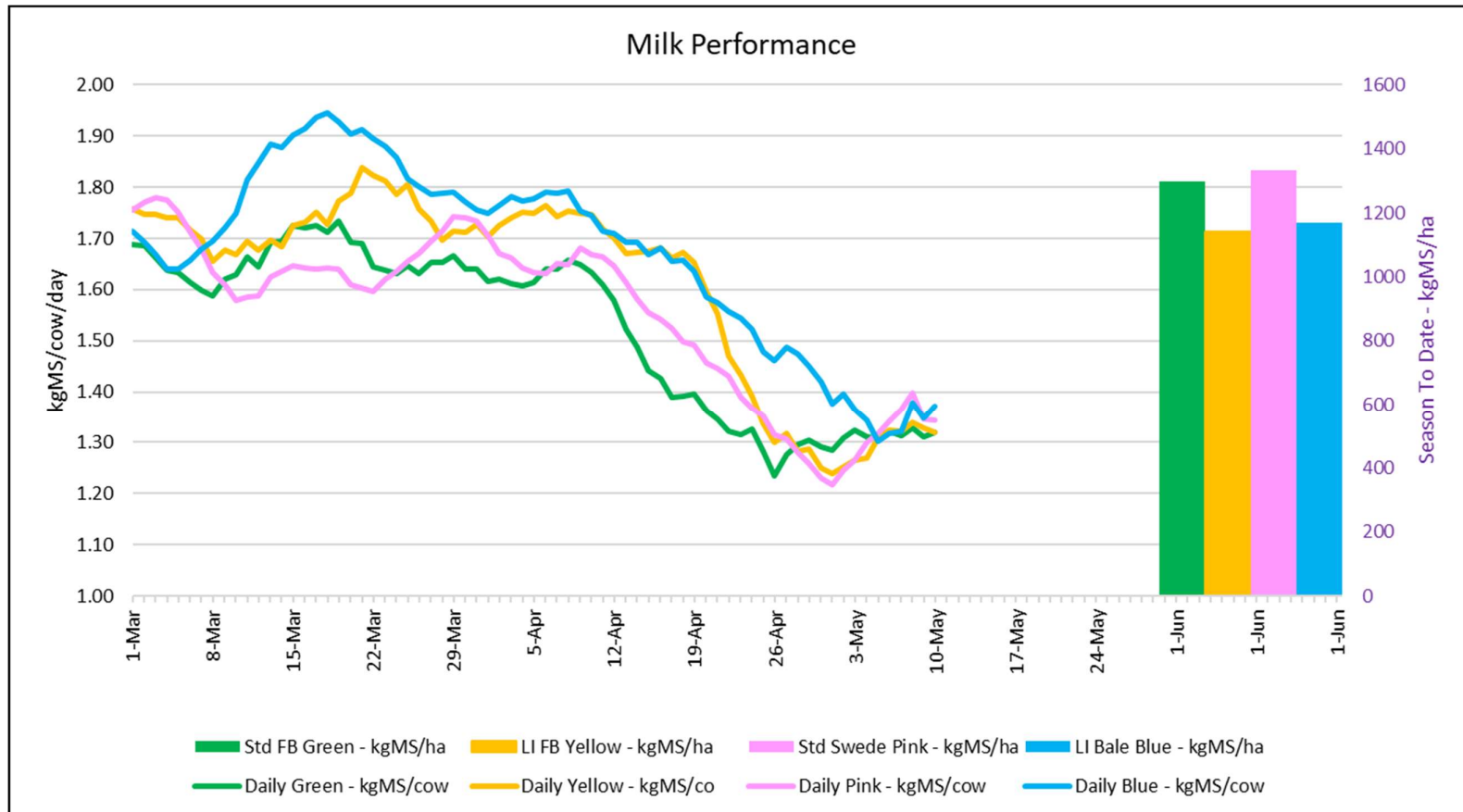


Figure 1: Milk solids production (cow/day) plus cumulative season production (kg/ha) at 9th May 2023

Feed

Principles of Feed management this week

Feed Quality	Pasture quality remains high with latest pasture samples averaging an ME average of 12, however crude protein levels are now in the high 20's. This is across both LI and Std farmlets, suggesting there is a lot of mineralized N in the soil following the dry spell in summer. Dry cows and heifers will be used to graze off paddocks of poorer quality and the milkers will be getting the highest quality feed in the wedges across all farmlets.
Growth Rate Management	Over the next week, there will be a conscious effort put on pulling down the APC. Growth rates continue to sit around 40 kgDM/ha/day although that is likely to change over the next week following the current cold front we are experiencing. With heifers coming onto the platform the rotation length will speed up next week. The aim is to maximise pasture intake for all groups of animals on the platform, but not at the detriment of residuals.
Nitrogen Strategy	Effluent continues to be applied to Std paddocks with the aim of getting the pond down to 30% full by dry off.

	Std brassica/baleage Pink	LI Baleage Blue	Std Fodder beet Green	LI Fodder beet Yellow
Quantity	APC holding	APC holding	APC holding	APC holding
Quality	Maintaining	Maintaining	Maintaining	Maintaining
Surplus Management	Excess stock into rotation	Excess stock into rotation	Excess stock into rotation	Excess stock into rotation
Supplement for coming week- kgDM (diff from last week)	0.8 (-2.4)	1.5 (-1.9)	4.5 (2.6)	5.8 (2.3)
Target Rotation Length (days)	50	54	52	57

Feed

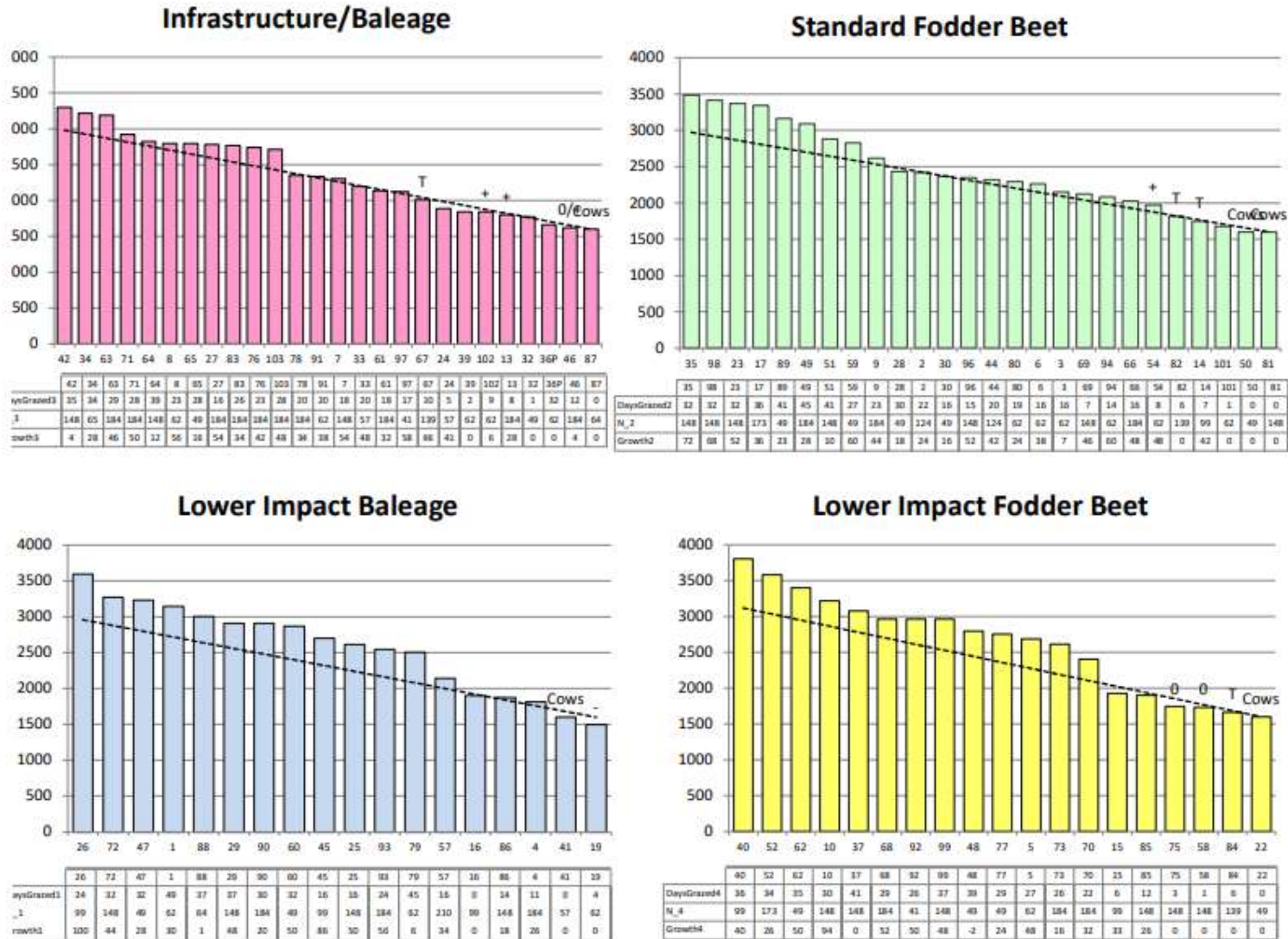


Figure 2: New Farmlet Feed Wedges as of 9 May 2023

Feed

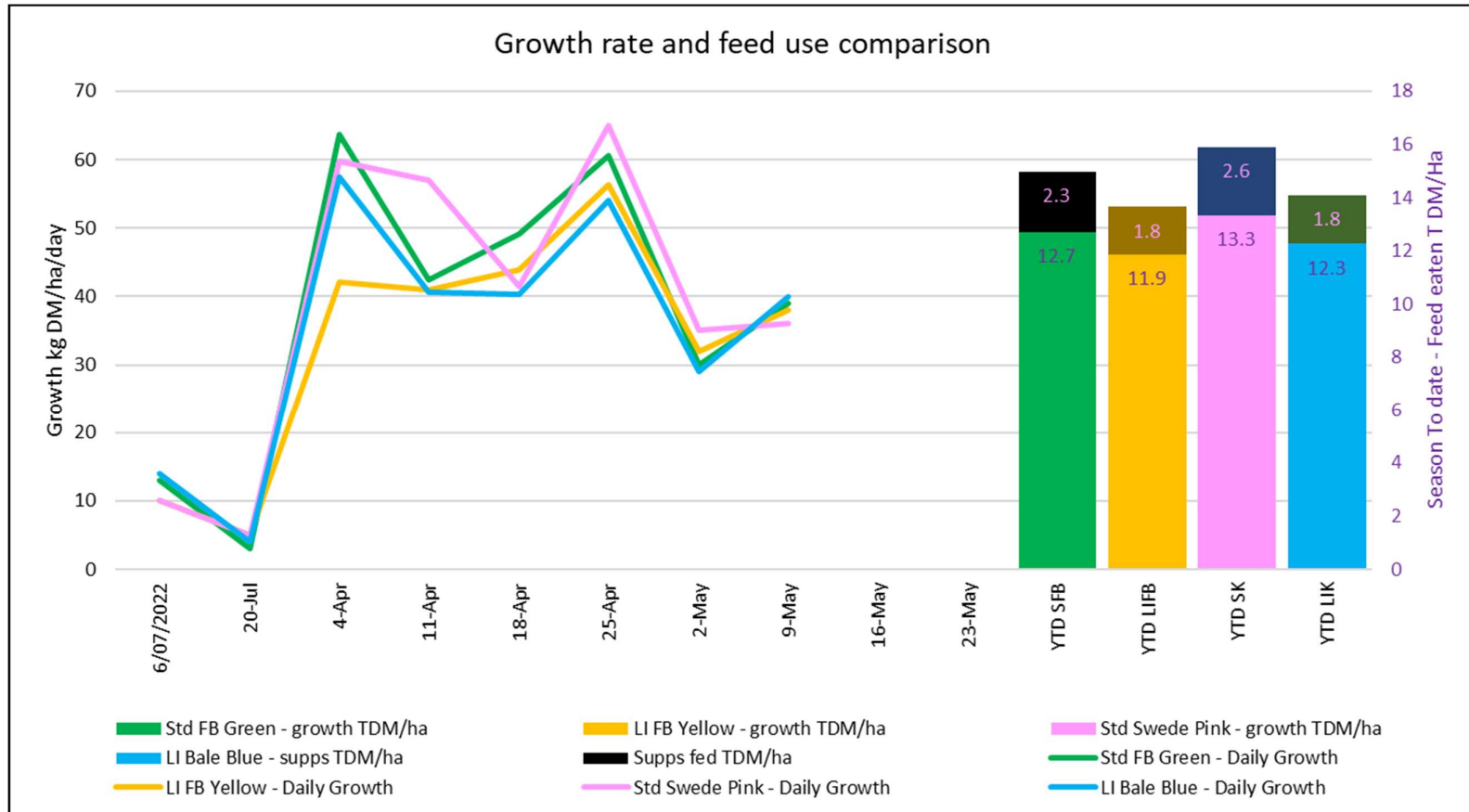


Figure 4: Weekly pasture growth rate at 9 May 2023 and year to date total feed eaten

The week in pictures



The heifers (2021 born) getting their herd tags and collars put on today!
Welcome to the herd girls!

The week in pictures



Left: Grass and Baleage Paddock all set for cows to go on at the end of the month.

Right: Bakura and Sam on this weeks farm walk! Still plenty of lush green feed around.

